

15 Amaretto Circuit Manor Lakes VIC

4 2 2

Nestled in a quiet pocket of the Manor Lakes Estate, set on a decent block approximately 453m². You will be welcomed with an abundance of natural light and quality finishes throughout. Within close-proximity to all the amenities Wyndham Vale train station, Manor Lakes P-12 school & Manor Lakes Shopping centre. Featuring four spacious bedrooms and two generously sized living zones and separate study. There is plenty of space throughout and a modern floor plan that everyone can enjoy.

Price : \$ 635,000
Land Size : 453 sqm
View : <https://www.ypa.com.au/7924163>

Quality appointments include...

- ? Master bedroom with WIR & ensuite
- ? Bedrooms all with BIR
- ? Separate Study/ Office room
- ? Multiple living areas
- ? Spacious Kitchen with walk in pantry, stone top benches, 900mm oven

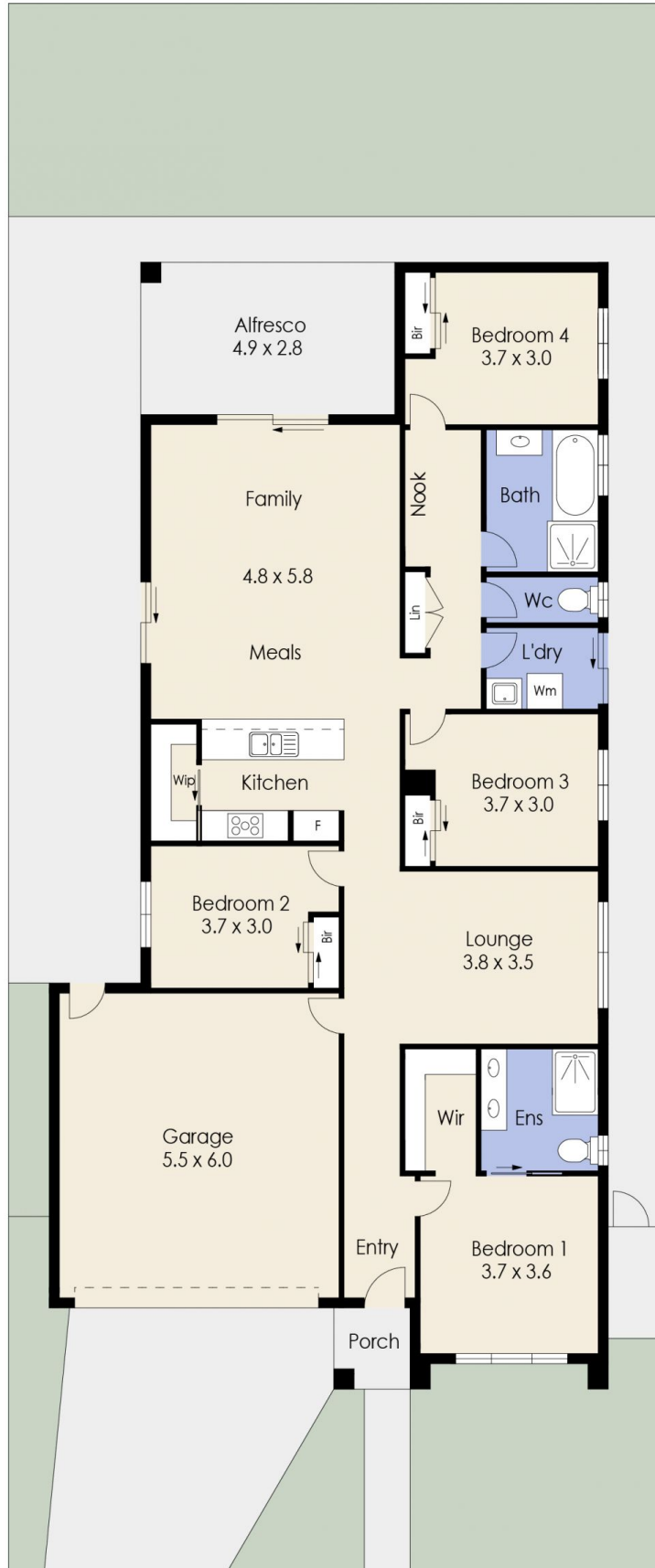


Kiarah Bagnato
0449 941 895



Danish Natha
0405 857 895

15 Amaretto Circuit, MANOR LAKES



Whilst every attempt has been made to ensure the accuracy of the floor plan contained here, measurements of doors, windows, rooms and any other items are approximate and no responsibility is taken for any error, omission, or mis-statement. This plan is for illustrative purposes only and should be used as such by any prospective purchaser. The services, systems and appliances shown have not been tested and no guarantee as to their operability or efficiency can be given.