

29 Bridge Road MELTON SOUTH VIC

5 🏠 2 🚗 4 🚗

Positioned in the sought after suburb of Melton South, this property sits on a 583m2(approx.) allotment and is in close proximity to every amenity you could need! Including schooling of all levels, Melton South and Cobblebank Train Stations, Cobblebank Athletics Track, Melton South Square, Cobblebank Village, Opalia Shopping Centre and easy Western Freeway Access providing an idealistic location for family living.

As soon as you enter this property you are greeted by a soothing colour palette, and roller shutters surrounding the property. The two bedrooms at the front of the home are both great in size, with the master showcasing a large ensuite, featuring spa bath, heat lamps and extended tiling. The ground floor hosts another bedroom at the rear of the property boasting a large robe/storage space, with direct access into the extended pergola.

Price : \$579,000 - \$629,000
Land Size : 583 sqm
View : <https://www.ypa.com.au/7922997>

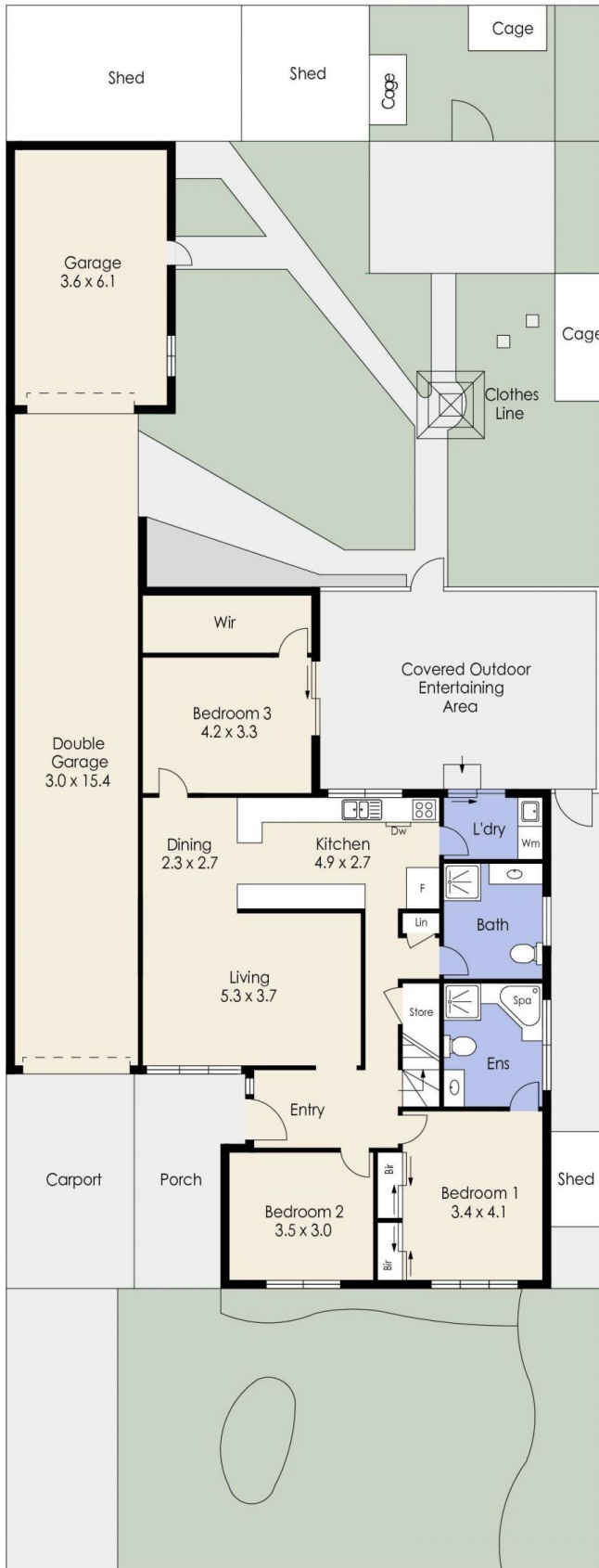


Shane Spiteri
0488 980 115

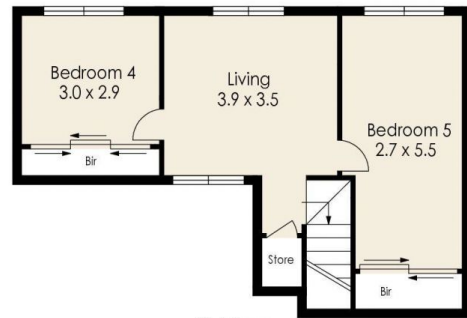


Ricky Frew
0402 007 100

29 Bridge Road, MELTON SOUTH



Ground Floor



First Floor

Whilst every attempt has been made to ensure the accuracy of the floor plan contained here, measurements of doors, windows, rooms and any other items are approximate and no responsibility is taken for any error, omission, or mis-statement. This plan is for illustrative purposes only and should be used as such by any prospective purchaser. The services, systems and appliances shown have not been tested and no guarantee as to their operability or efficiency can be given.