



6 Grieve Parade Altona VIC

3 1 3

Offered for the first time in over half a century this very unique opportunity of 1,060 square meters of prime land in the continuously evolving coastal neighbourhood.

With an expansive 20-meter frontage, this exceptional property offers boundless opportunities for all buyers, exuding a landmark potential and endless possibilities.

Nestled in a coveted blue-chip family enclave and esteemed lifestyle locale, you'll find yourself just a leisurely stroll away from the beach, train station, and the vibrant village centre.

Whether you're looking to construct your luxurious dream home, embark on a renovation project, or explore a grand multi development venture (subject to council approval), this property caters to your every ambition.

Price : \$ 1,500,000
Land Size : 1060 sqm
View : <https://www.ypa.com.au/7920711>

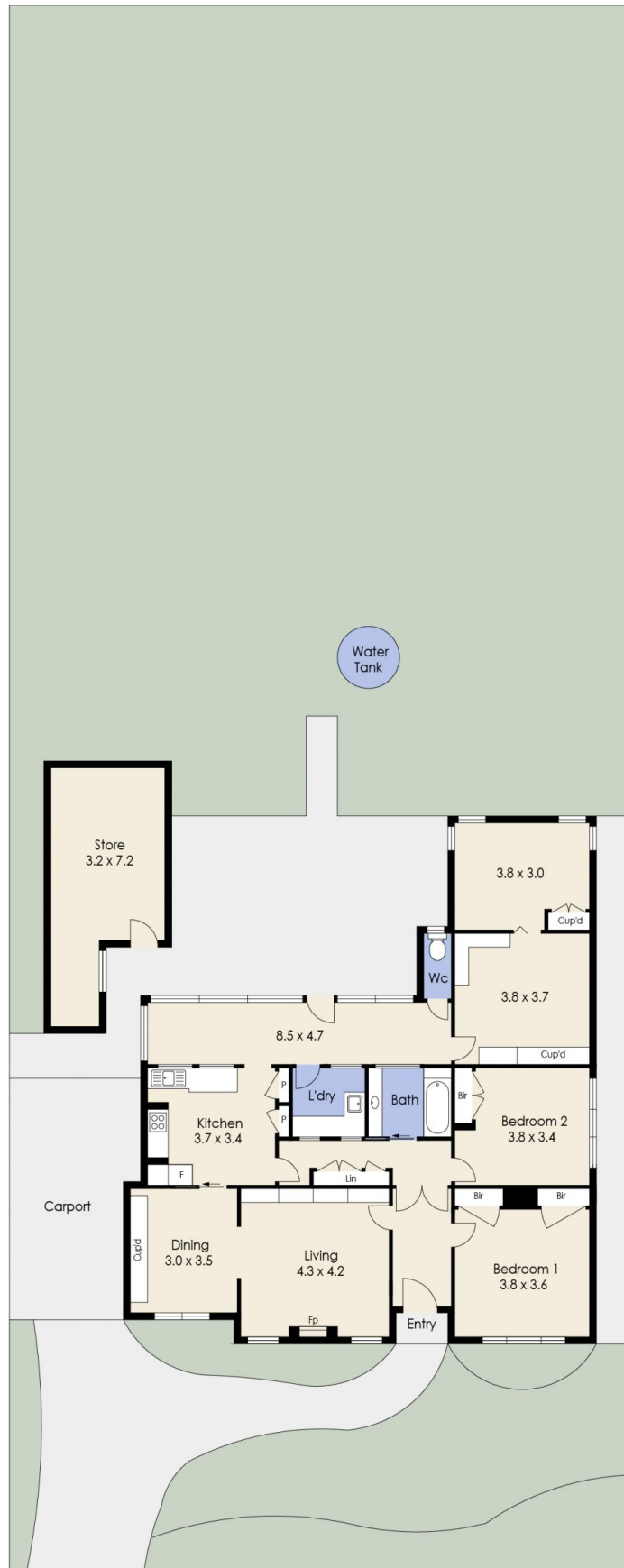


James Antonio
 0401 889 248



Abdul Merabi
 0424 263 506

6 Grieve Parade, ALTONA



Whilst every attempt has been made to ensure the accuracy of the floor plan contained here, measurements of doors, windows, rooms and any other items are approximate and no responsibility is taken for any error, omission, or mis-statement. This plan is for illustrative purposes only and should be used as such by any prospective purchaser. The services, systems and appliances shown have not been tested and no guarantee as to their operability or efficiency can be given.