



## 14 Harshaw Road THORNHILL PARK VIC

3 2 1

This high-quality near-new build features an impressive blend of captivating modern features and contemporary style. Located in the highly sought-after Thornhill Park, nearby to parks and freeway access and with future schools, shopping districts, train station with so much more to come including the new Melton Hospital!

A gorgeous front facade with low maintenance garden will welcome you towards this stunning home. Upon entry you are met with gorgeous floorboards that flow throughout the home creating a sense of warmth.

The home comprises of three great-sized bedrooms with the large master bedroom comprising of a walk-through robe leading into the stunning ensuite which boasts stone benchtops and a beautiful neutral colour scheme. The remaining two bedrooms both feature built in robes and are

**Price** : \$499,000 - \$549,000

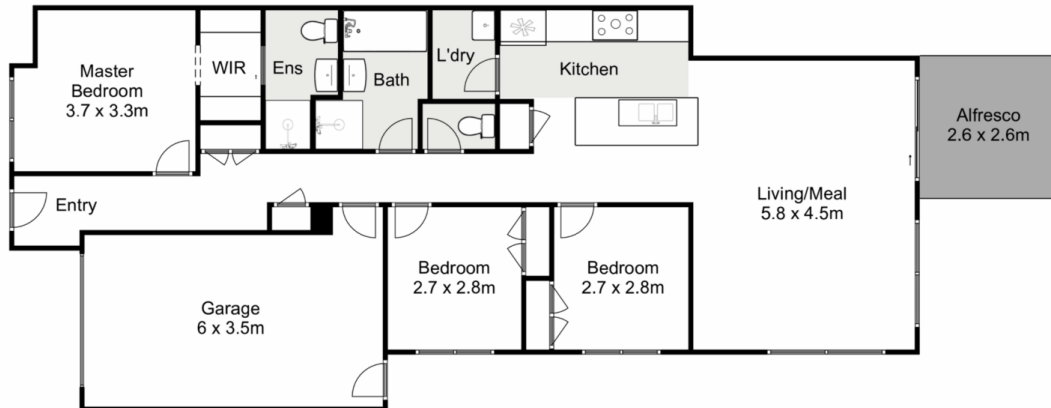
**View** : <https://www.ypa.com.au/7920117>



**Ryan Anders**  
0434 900 300



**Kate McGlone**  
0401 853 244



## 14 Harshaw Road, Thornhill Park

ypa

Whilst every attempt has been made to ensure the accuracy of the floor plan contained here, measurements of doors, windows, rooms and any other items are approximate and no responsibility is taken for any error, omission, or mis-statement. This plan is for illustrative purposes only and should be used as such by any prospective purchaser. The services, systems and appliances shown have not been tested and no guarantee as to their operability or efficiency can be given.

