



## 28 Fullwood Drive Sunbury VIC

5 2 2

Are you trying to find a home that every member of your family will be satisfied with? You really don't need to look any further because what we have here has an abundance of options for the entire family to enjoy. Starting off with SIDE ACCESS and its tremendous land size of 1215m2 approx! Make the most of life with this spacious block. Entertaining is endless with an inground swimming pool, undercover pergola with views of surrounding nature and you will never get sick of hearing the birds chirp away.

Such a wonderful home and location to be a part of! It becomes clear very quickly why so many buyers want to be part of this Estate, through its winding road you will see how home proud all the neighbours are! You'll enjoy the convenience of being so close to the Calder Freeway Entrance, schools, shops close by, a bus stop right out front, gorgeous parks and walking tracks nearby and a

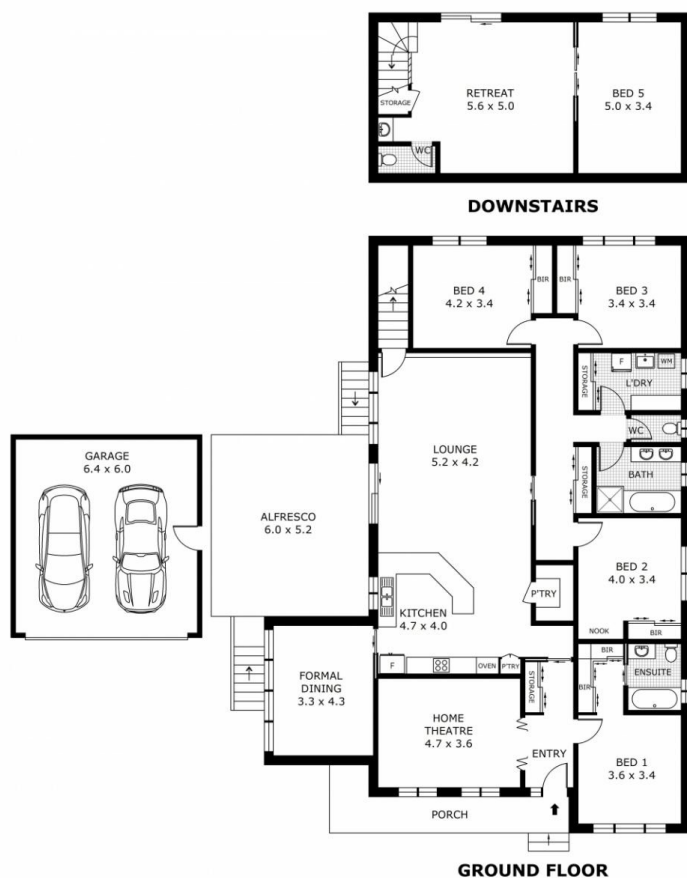
**Price** : \$1,020,000 - \$1,120,000  
**Land Size** : 1215 sqm  
**View** : <https://www.ypa.com.au/7914702>



**Lisa Totaro**  
0410 144 215



**Cassandra Doria**  
0497 972 028



Disclaimer: All images, views and diagrams are indicative only. Dimensions, areas and landscape are indicative and subject to change without notice. Purchasers should check the plans and specifications included in the terms of the contract of sale carefully prior to signing the contract.