

## 38 Enrica Drive Melton South VIC

4  2  2 

This brand-new quality home positioned in one of the most desirable new pockets of Melton South, this wonderfully presented home has so much to offer to anyone looking for a quality home with ample upgrades. Within close proximity to all levels of schooling, parks, freeway access, Melton South & Opalia Shopping Centre, Melton South and Cobblebank Train Stations, you simply can't go wrong with this prime location!

Out front, you are first greeted with an elegant modern façade with exceptional landscaping that immediately grabs attention and sets the tone for the attention to detail we would expect from the perfect family home.

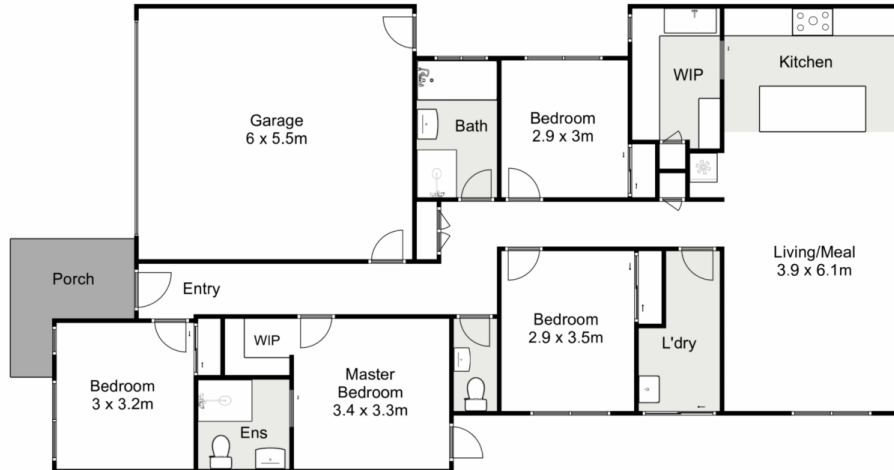
Moving through the home you'll find the master bedroom with upgraded bathroom with floor-to-ceiling tiles and a walk-in robe. The remaining three bedrooms are all built in

**Price** : \$ 570,000

**View** : <https://www.ypa.com.au/7913292>



**Monty Tyagi**  
0435 896 907



## 38 Enrica Drive, Melton South

Ypa

Whilst every attempt has been made to ensure the accuracy of the floor plan contained here, measurements of doors, windows, rooms and any other items are approximate and no responsibility is taken for any error, omission, or mis-statement. This plan is for illustrative purposes only and should be used as such by any prospective purchaser. The services, systems and appliances shown have not been tested and no guarantee as to their operability or efficiency can be given.

