



## 383 Heaths Road Werribee VIC

3 1 2

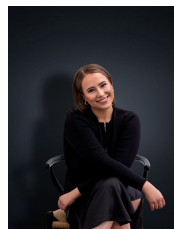
Introducing a beautiful home, full of character! Located within walking distance to Pacific Werribee, 7/11 service station, the highly renowned Starbucks along with the public transport network.

View : <https://www.ypa.com.au/7908941>

### Property Features:

- ? Three generous bedrooms fitted with built in robes
- ? Main central bathroom adjoining to master bedroom
- ? Separate formal lounge room
- ? Hostess kitchen & meals zone

Extra Features: Laundry offering rear access, separate toilet, ducted heating & cooling, two car carport and a large low maintenance backyard w/ garden shed.



**Ali Dowling**  
03 9741 7777