



11 Noranda Circuit Harkness VIC

4 2 2

This fantastic modern family domain, positioned in a quiet street in the heart of Harkness is a great opportunity for all home buyers and investors alike to secure an immaculately cared for property. Being in close proximity to everything Melton has to offer including, schooling of all levels, Woodgrove Shopping Centre, Melton Waves Leisure centre, Navan Park, walking tracks, easy freeway access and so much more.

Upon entry you are greeted with plenty of space to utilise as a study nook or for a huge hall table. This connects to the grand sized master bedroom featuring tinted windows, roller shutters, ceiling fan and a large walk-in robe that leads to the modern bathroom inclusive of a double vanity and larger shower.

As you make your way to the heart of the home, you are

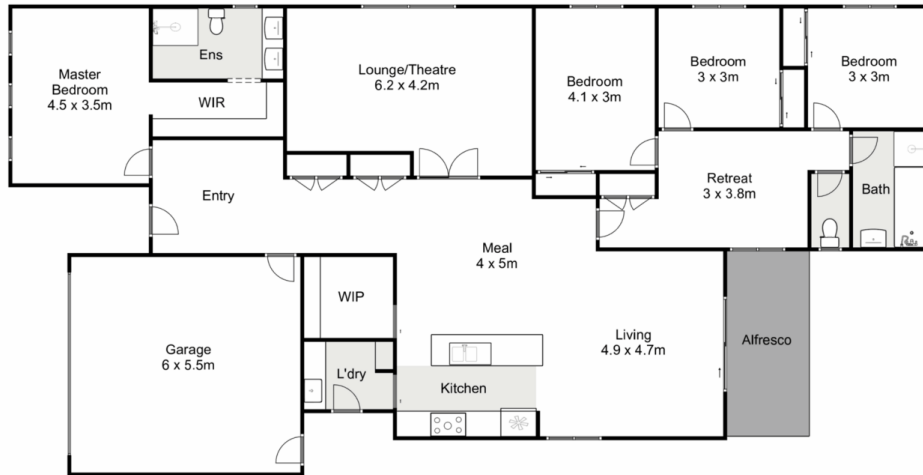
Price : \$ 650,000
Land Size : 448 sqm
View : <https://www.ypa.com.au/7898695>



Shane Spiteri
0488 980 115



Tahlia Hall
0422 419 589



11 Noranda Circuit, Harkness

ypa

Whilst every attempt has been made to ensure the accuracy of the floor plan contained here, measurements of doors, windows, rooms and any other items are approximate and no responsibility is taken for any error, omission, or mis-statement. This plan is for illustrative purposes only and should be used as such by any prospective purchaser. The services, systems and appliances shown have not been tested and no guarantee as to their operability or efficiency can be given.

