

2/119 Mossfiel Drive Hoppers Crossing VIC

2 1 1

Discover this modern gem in the vibrant Mossfiel Estate Hoppers Crossing. Close to schools, parks, and shopping centers, this property is perfect for young families, downsizers and investors alike.

With 2 large fitted bedrooms, central bathroom and separate laundry the open-plan design seamlessly connects the kitchen, meals area, and living room, creating a welcoming space for everyday activities and entertaining guests. The kitchen is well-equipped with stainless steel appliances, pantry and plenty of bench space.

Conveniently located near St Peter's Primary School, Mossfiel Reserve Sporting Centre, and Pacific Werribee Shopping Centre, this home offers a desirable lifestyle.

Price : \$ 400,000

View : <https://www.ypa.com.au/7898389>

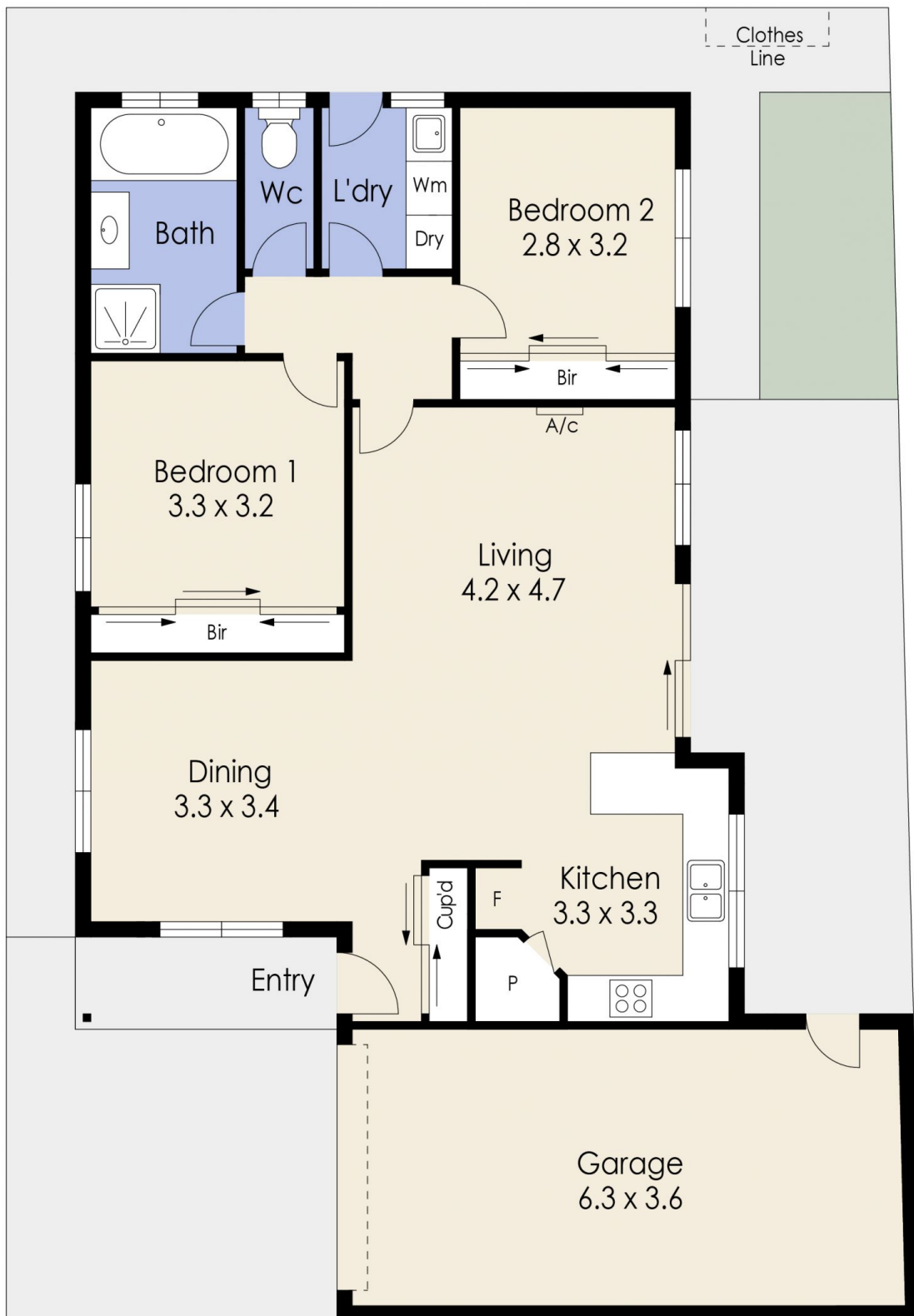


Abdul Merabi
0424263506



James Antonio
0401 889 248

2/119 Mossfiel Drive, HOPPERS CROSSING



Whilst every attempt has been made to ensure the accuracy of the floor plan contained here, measurements of doors, windows, rooms and any other items are approximate and no responsibility is taken for any error, omission, or mis-statement. This plan is for illustrative purposes only and should be used as such by any prospective purchaser. The services, systems and appliances shown have not been tested and no guarantee as to their operability or efficiency can be given.