



10 Chelmsford Way Melton West VIC

3 2

Welcome to 10 Chelmsford Way Melton West, a charming home built to last, ideal for first home buyers, investors, and growing families. Step into the charm of this nurtured three bedroom, two bathroom home that displays character and timeless appeal. Nestled in a well-established pocket, this gem has been lovingly looked after, offering a comforting blend of vintage aesthetics and modern conveniences.

This delightful home enjoys a convenient location to all levels of schooling, public transport, Woodgrove shopping centre, Melton Waves Leisure Centre, and easy freeway access, providing residents with easy access to a variety of services and recreational activities.

Upon entry you are greeted by the generously sized master bedroom featuring ceiling fan, mirrored sliding doors,

Price : \$ 494,000

Land Size : 673 sqm

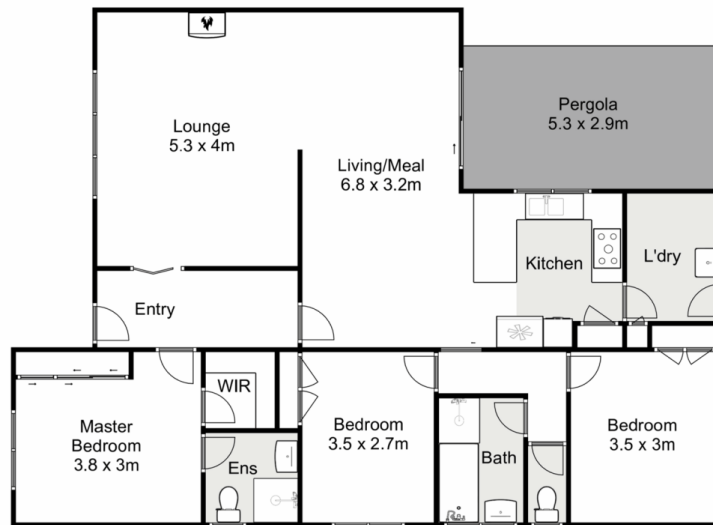
View : <https://www.ypa.com.au/7895529>



Shane Spiteri
0488 980 115



Tahlia Hall
0422 419 589



10 Chelmsford Way, Melton West

YPA

Whilst every attempt has been made to ensure the accuracy of the floor plan contained here, measurements of doors, windows, rooms and any other items are approximate and no responsibility is taken for any error, omission, or mis-statement. This plan is for illustrative purposes only and should be used as such by any prospective purchaser. The services, systems and appliances shown have not been tested and no guarantee as to their operability or efficiency can be given.

