



50 South Circular Road Gladstone Park VIC

3  1  1 

Lovingly maintained and enjoyed for over fifty years?this home is now for sale for the first time and ready for a new beginning. The advantages of this property, in an extremely desirable location, are endless.

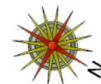
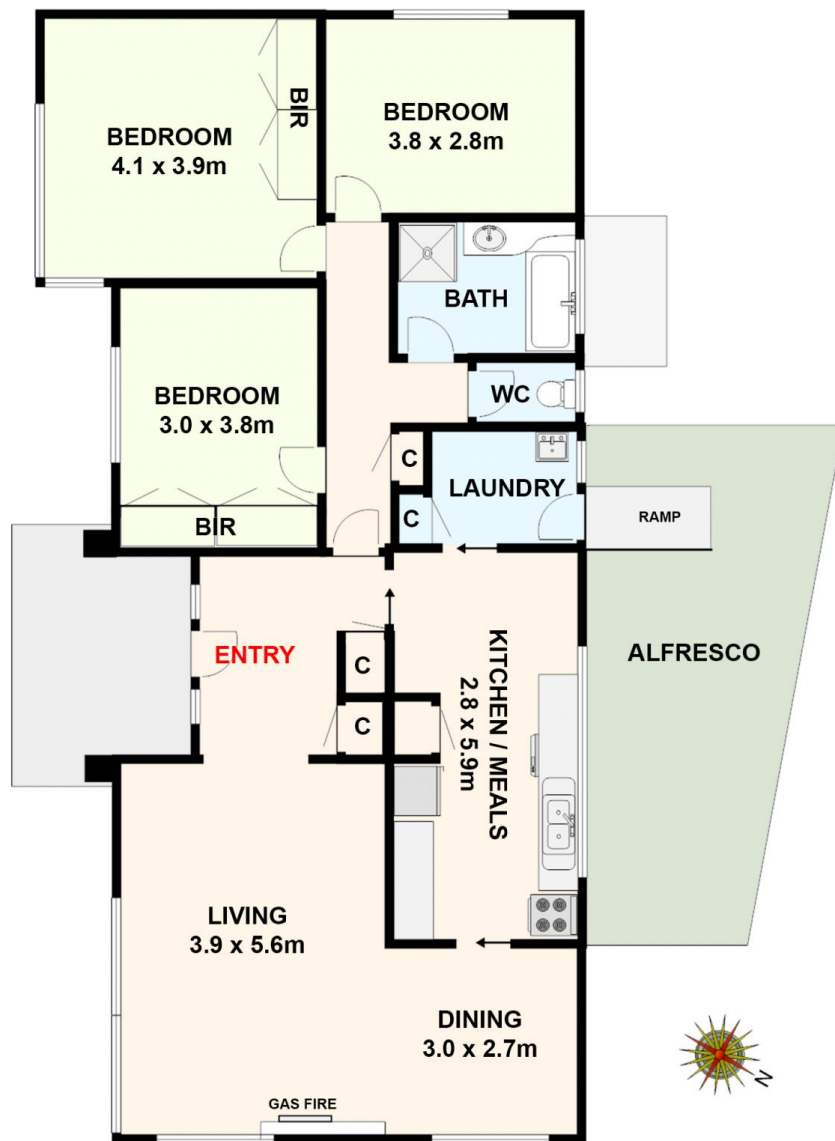
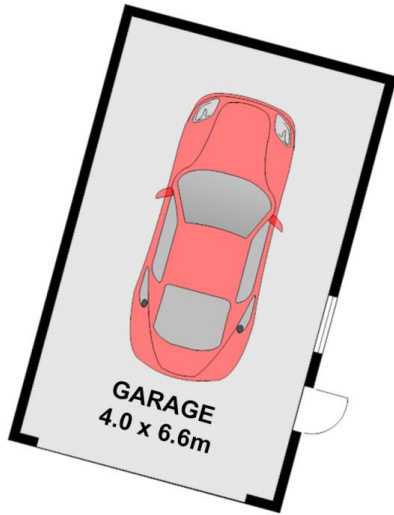
Measuring 561m2 (approx.) with an 16.8metre (approx.) frontage, this flat, perfectly rectangular property represents an excellent opportunity to significantly renovate, extend or alternatively pursue new home site concepts to redevelop and build your dream home or design and construct two side by side dwellings (S.T.C.A), promising an exceptional future at a popular address, in an inner city suburb, located only 15km to Melbourne City.

Convenience is key, where this optimum position allows you to leave the car at home and enjoy first class amenities ALL within walking distance with only a few minutes' walk

Price : \$ 675,000
Land Size : 561 sqm
View : <https://www.ypa.com.au/7895035>



Michael Sassine
0421 023 243



50 South Circular Drive, Gladstone Park.
All data and dimensions shown in this sketch are approximate.