



9/12 Mingos Court Werribee VIC

2 1 1

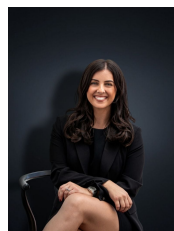
Ready to move in this low maintenance home is perfect for a first home buyer or investment opportunity. Surprising you with a spacious design there are so many advantages to this beautiful home.

Located centrally within a short drive to Werribee CBD, Train Station with café's, shops and everything you could need. A short drive to freeway access and walking distance to Parks and reputable schools. Also equally as quick to Wyndham Vale Train Station and Manor Lakes Central.

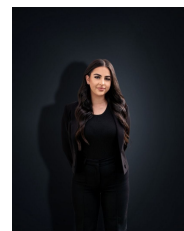
The home offers:

- ? Two spacious bedrooms with built in robes
- ? Central bathroom
- ? Kitchen, Meals & Family living space
- ? Quality stainless steel kitchen appliances and dishwasher

Price : \$ 400,000
Land Size : 134 sqm
View : <https://www.ypa.com.au/7893872>

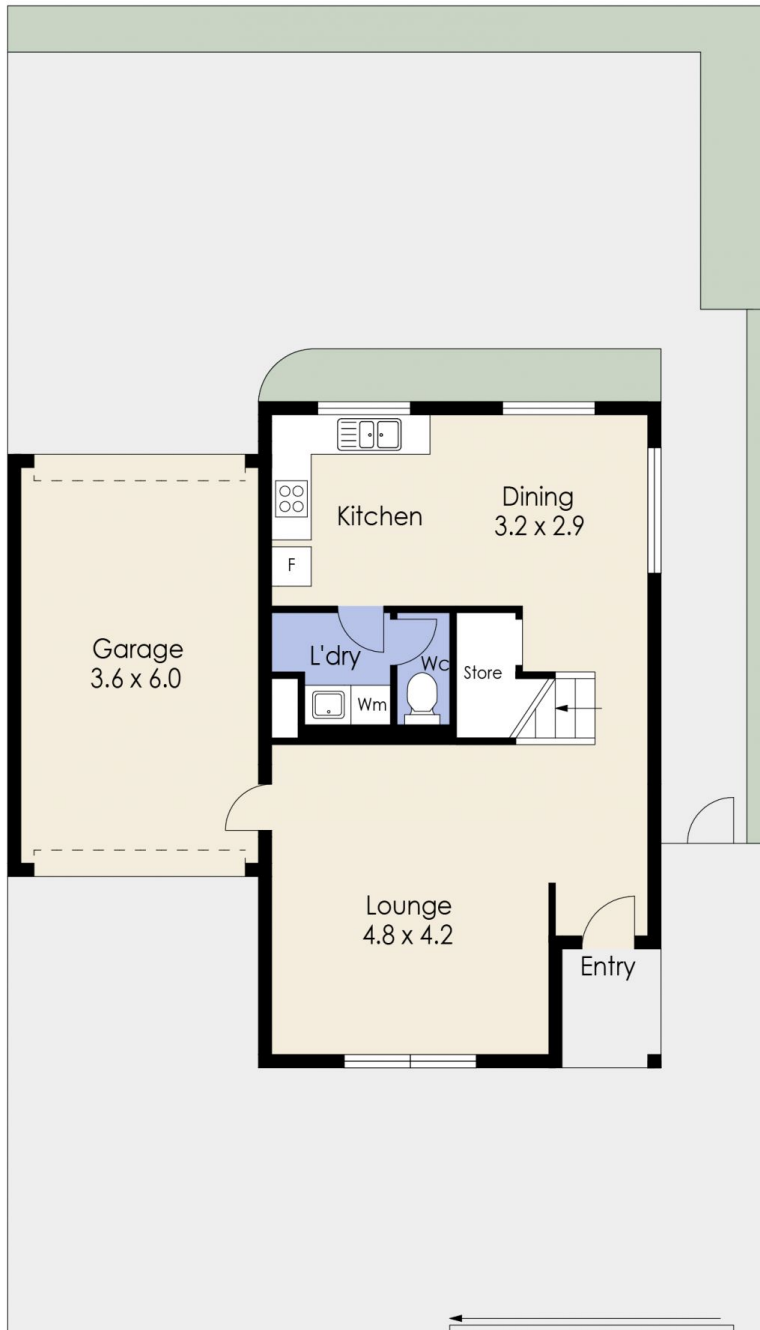


Kirsty Cunningham
 0414 344 475

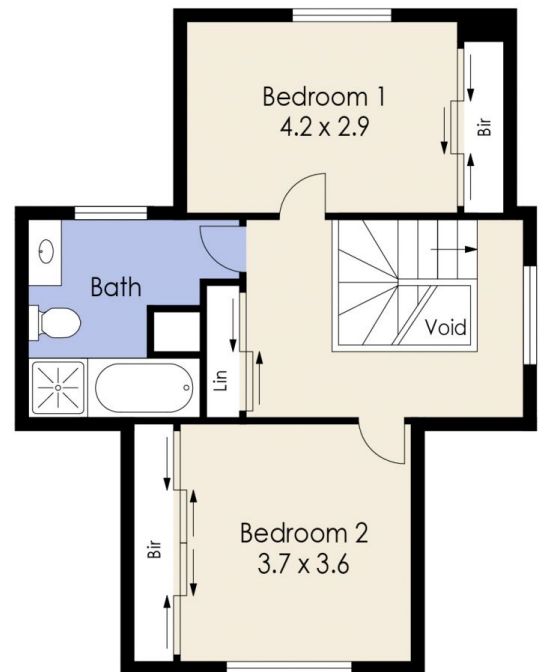


Stefanie Zahra
 0406 871 722

9/12 Mingos Court, WERRIBEE



Ground Floor



First Floor

Whilst every attempt has been made to ensure the accuracy of the floor plan contained here, measurements of doors, windows, rooms and any other items are approximate and no responsibility is taken for any error, omission, or mis-statement. This plan is for illustrative purposes only and should be used as such by any prospective purchaser. The services, systems and appliances shown have not been tested and no guarantee as to their operability or efficiency can be given.