



50 Ambleside Road Greenvale VIC

3  2  1 

Perfectly located in original Greenvale, is this uniquely designed street front townhouse with no owners corporation fees with its striking façade and impressive floorplan, are just a few priceless components that complement this residence.

Graced with flair and spread over two storeys the home combines traditional comforts and evocative charms designed to accommodate the growing family that will leave an instant impression.

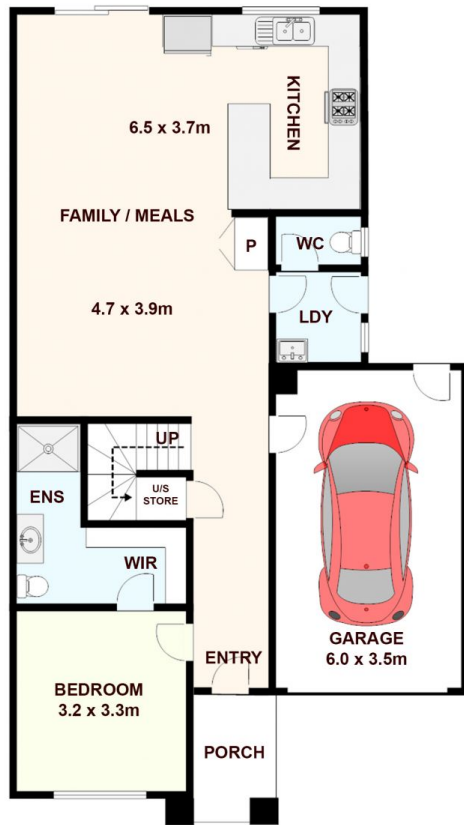
The welcoming entrance flows through to neutral colour tones that combines beautifully with the durable, yet elegant Karndean flooring throughout the lower level, together with the striking timber staircase and carpeted upper level adding the finishing touch.

This 18m2 (approx.) residence will appeal to those wanting

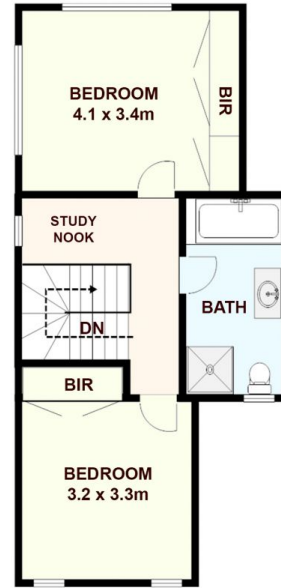
View : <https://www.ypa.com.au/7890764>



Michael Sassine
0421 023 243



Upper Level



50 Ambleside Road, Greenvale.

All data and dimensions shown on this sketch are approximate.