

30 Cairns Drive Darley VIC

4 2 5

Indulge in a sensational family lifestyle in the highly sought-after 'Elms' estate with this remarkable residence set on an expansive 1,250m² block. Boasting four bedrooms, the master bedroom with a walk-in robe and ensuite, while the remaining three bedrooms feature built-in wardrobes, ceiling fans, and upgraded carpets.

The modern and sleek kitchen is a focal point, equipped with ample cupboard space, an impressive brand new SMEG Oven, dishwasher, range hood, and bathed in natural light, serving as the perfect central hub to the home. The large lounge area, complete with a built-in wood heater, is strategically positioned within the floor plan to ensure every family member and guest can enjoy their own space.

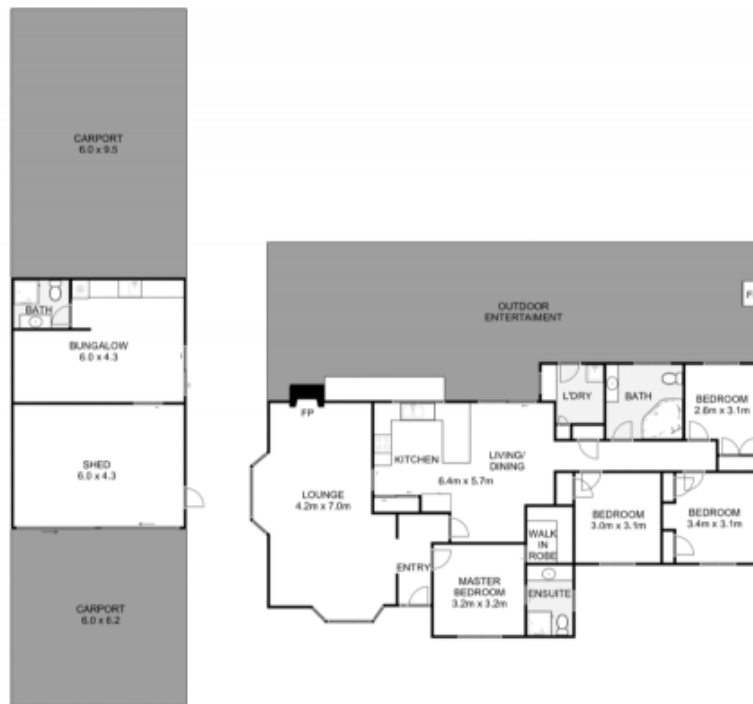
Outdoor living reaches new heights with the impressive

Land Size : 1250 sqm

View : <https://www.ypa.com.au/7888381>



Jodi Nash
0419 342 120



30 Cairns Drive, Darley



Whilst every attempt has been made to ensure the accuracy of the floor plan contained here, measurements of doors, windows, rooms and any other items are approximate and no responsibility is taken for any error, omission, or mis-statement. This plan is for illustrative purposes only and should be used as such by any prospective purchaser. The services, systems and appliances shown have not been tested and no guarantee as to their operability or efficiency can be given.

