

7 Lionsgate Crescent Tarneit VIC

5 🛏 3 🚿 2 🚗

This stunning home is sure to impress and tick all the boxes that a large family could hope for. Built by Sheridan Homes this is high end living with premium fittings that will simply give you that WOW factor from the minute you arrive.

Price : \$ 1,030,000

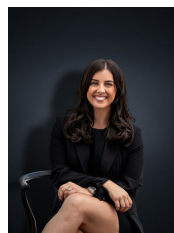
Land Size : 448 sqm

View : <https://www.ypa.com.au/7884345>

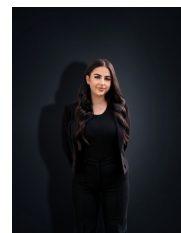
Situated within the Newgate estate you are located so centrally to everything Tarneit has to offer, walking distance to parks and cafés, Riverdale Shopping Village (Approx 1.5km), Tarneit Rise PS (Approx. 2.5km), Tarneit P-9 (Approx. 4km), Tarneit Train Station (Approx. 6km) and many more amenities right at your doorstep!

The home, with the most impeccable presentation offers;

- ? Five spacious bedrooms
- ? Two separate master suites, one on each floor

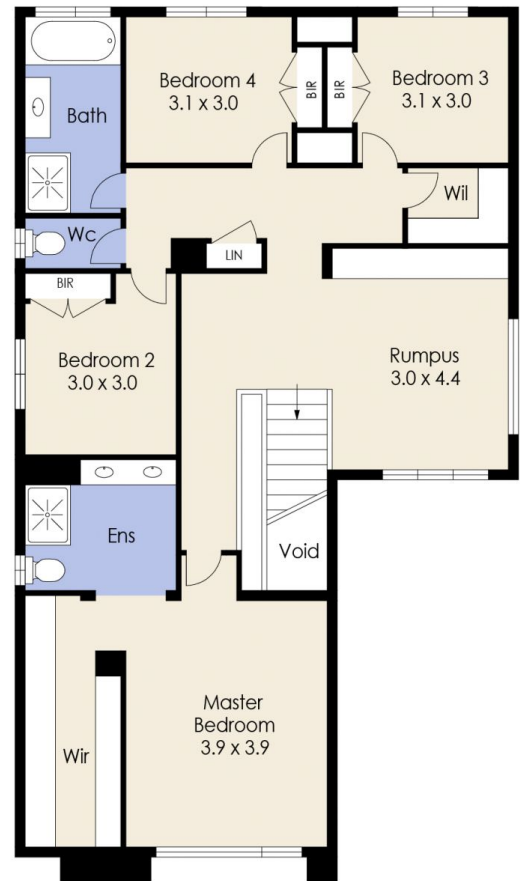


Kirsty Cunningham
0414 344 475



Stefanie Zahra
0406 871 722

7 Lionsgate Crescent, TARNEIT



First Floor

Whilst every attempt has been made to ensure the accuracy of the floor plan contained here, measurements of doors, windows, rooms and any other items are approximate and no responsibility is taken for any error, omission, or mis-statement. This plan is for illustrative purposes only and should be used as such by any prospective purchaser. The services, systems and appliances shown have not been tested and no guarantee as to their operability or efficiency can be given.