



31 Pilbara Avenue BURNSIDE VIC

6 2 3

Welcome to an extraordinary residence in the heart of Burnside, where luxury and space converge in a stunning corner double-storey home set on a sprawling 710m² land. The journey begins with a grand entrance, a spacious hallway beckoning you into a realm of elegance and comfort, adorned with laminated floorboards that flow seamlessly throughout.

On the ground floor, a generously sized formal lounge invites you to unwind and entertain, setting the tone for the impressive living spaces within. Connected to the double garages, a practical study area enhances the functionality of the home. The master bedroom, a haven of opulence, features an ensuite and a walk-in wardrobe, providing a private retreat within the residence.

The family living area unfolds gracefully, merging with the

Price : \$ 775,000
Land Size : 710 sqm
View : <https://www.ypa.com.au/7879960>



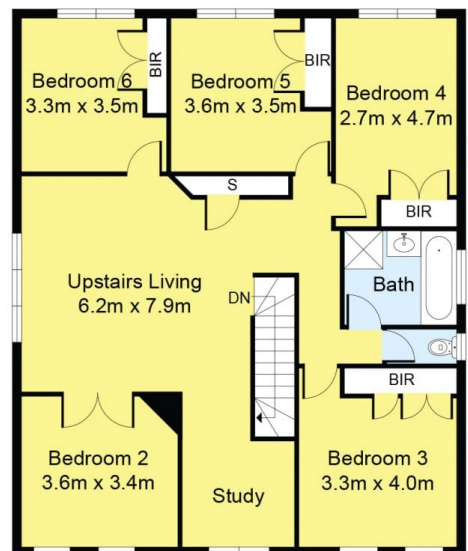
Andy Nguyen
0426821593



Hugh Huynh
0434848987



Ground Floor



First Floor

Disclaimer: Whilst we believe the contents of this document to be accurate, we suggest the prospective purchasers make any necessary enquiries to satisfy themselves. All measurements are approximate. We do not accept responsibility for any errors or omissions.

31 Pilbara Avenue, Burnside

