

## 6 Lambie Way Roxburgh Park VIC

5 2 2

Situated on a generous 539sqm allotment, this home is nestled in the heart of Roxburgh Park, offering convenient access to public transport, schools, and the Roxburgh Park Central shopping complex.

Spanning across two levels, this residence provides ample space and versatility. The ground floor features a three formal lounges, an open kitchen and meals area, a separate office or study that can also function as a fifth bedroom, brand new-appointed kitchen with ample cupboard space, a separate laundry, and a powder room. The kitchen seamlessly connects to the adjoining family and meals area, which leads out to a sprawling outdoor entertaining space, perfect for hosting gatherings. The property comprises four bedrooms with built-in robes, including a master suite with a full ensuite and a spacious walk-in robe, as well as an additional study or office

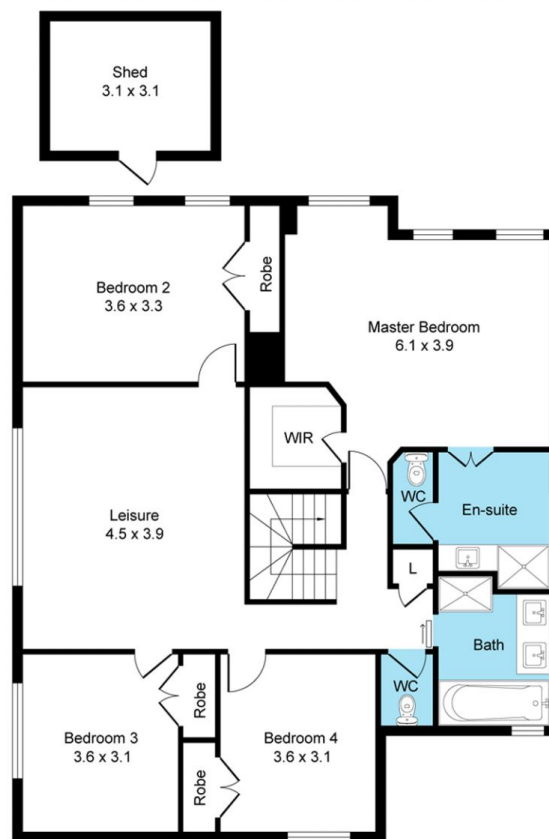
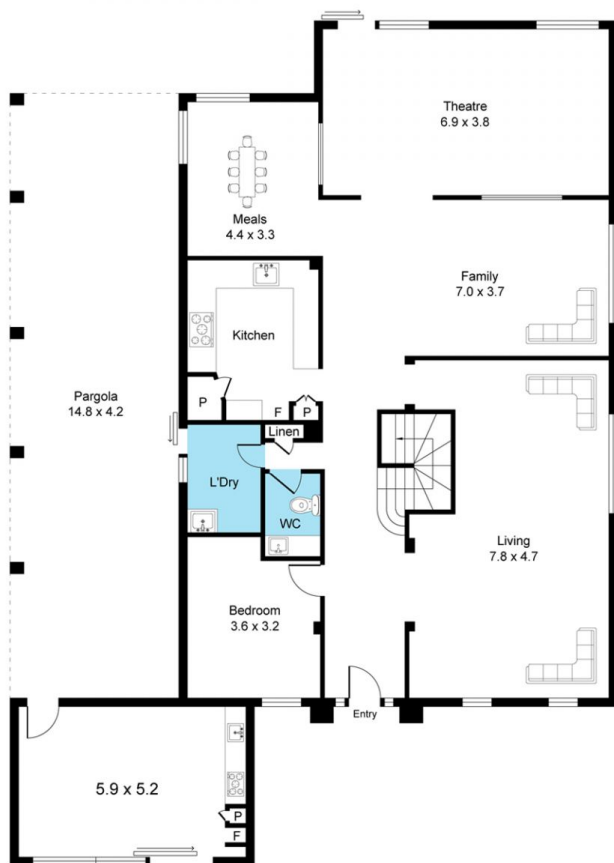
**Price** : \$860,000 - \$920,000  
**Land Size** : 539 sqm  
**View** : <https://www.ypa.com.au/7877236>



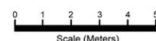
**Virginia Haroun**  
 0413 432 165



**Khaled Khaled**  
 0400 004 556



## 6 Lambie Way Roxburgh Park



Disclaimer: Whilst every attempt has been made to ensure the accuracy of floor plan , measurements are approximate , not to scale. for illustrative purposes only.

