

## 11 Scanlon Street Aintree VIC

3 2 2

This impeccably maintained property not only radiates perfection but is conveniently located near Bacchus Marsh Grammar School, Woodlea Town Centre, public transport, the Western Highway, and scenic walking tracks.

YPA proudly introduces this outstanding residence in the highly respected Woodlea Estate. Seamlessly combining practicality with comfort, it stands as a testament to thorough care and attention to detail.

A haven within a prestigious community, this home offers a superior living experience, blending modern conveniences with tranquillity. Explore the charm and sophistication of this residence, where every detail has been curated to surpass every expectations. There's no wonder homes like these don't stay on the market very long.

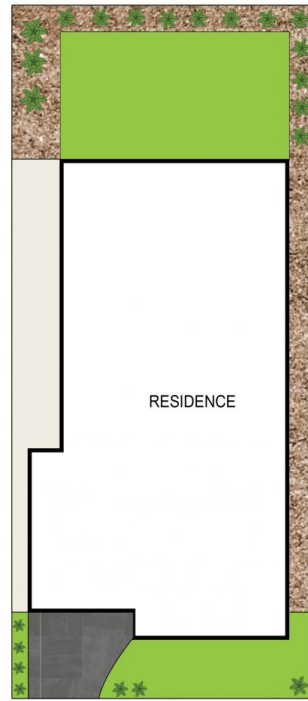
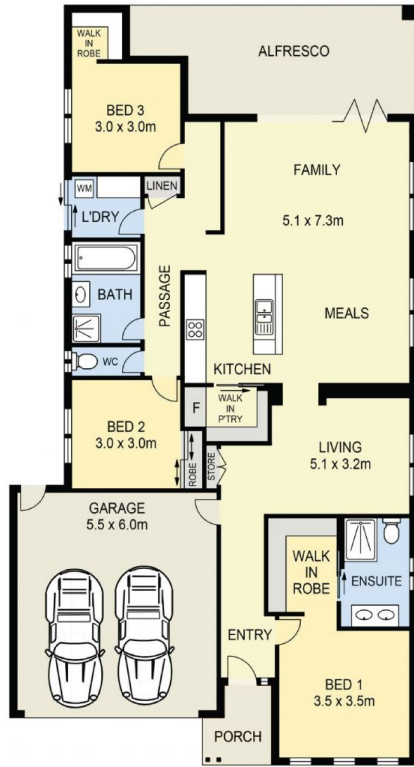
**Price** : \$ 650,000  
**Land Size** : 400 sqm  
**View** : <https://www.ypa.com.au/7876531>



**Stephen Azzopardi**  
0402 012 554



**Andrew Migliorisi**  
0432 526 844



SITE PLAN  
(NOT TO SCALE)



## 11 Scanlon Street, Aintree

DISCLAIMER : ALL DIMENSIONS ARE AN APPROXIMATION ONLY AND NO GUARANTEE IS GIVEN WITH RESPECT TO ACCURACY.