



4 Pinnacle Point Road Bacchus Marsh VIC

4 2 2

Presenting a rare opportunity, this beautiful 4-year-old home is a treasure not to be missed! Boasting a thoughtful design and modern features, it is an embodiment of contemporary living.

This residence comprises four generously sized bedrooms, with the master featuring a walk-in robe and ensuite, while the remaining bedrooms offer built-in robes. A separate lounge area provides a spacious retreat, perfect for unwinding with family and friends.

The heart of the home is the stylish kitchen, centrally positioned and equipped with 40mm stone benches, a 900mm stove, built-in microwave, dishwasher, and pendant lighting over the bench. Overlooking the living area and dining space, the kitchen seamlessly extends to the expansive eco-decked alfresco area-an entertainer's

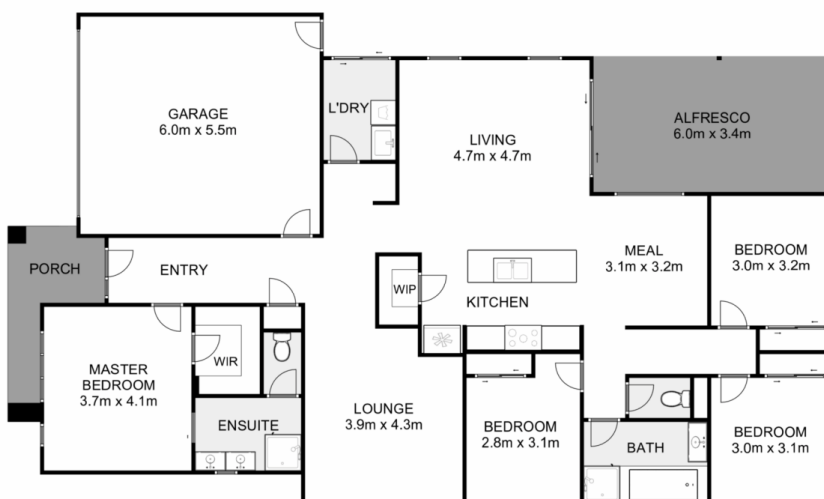
Price : \$ 695,000
Land Size : 495 sqm
View : <https://www.ypa.com.au/7865900>



Izabel Dusik
0421 833 010



Jodi Nash
0419 342 120



4 Pinnacle Point Road, Bacchus Marsh

ypa

Whilst every attempt has been made to ensure the accuracy of the floor plan contained here, measurements of doors, windows, rooms and any other items are approximate and no responsibility is taken for any error, omission, or mis-statement. This plan is for illustrative purposes only and should be used as such by any prospective purchaser. The services, systems and appliances shown have not been tested and no guarantee as to their operability or efficiency can be given.

