

## 4 Colchester Drive Werribee VIC

3  2  2 

If location matters to you, then look no further. Located in a quiet pocket within in the growing and popular Cornerstone Estate sits this five-year-old home ready for the next buyer to move straight in. With the impressive Safari Park just a short walk away it is ideal for families and only a short distance to schools, shops and Cornerstone future waterway walking tracks. This property offers the next lucky owners.

- ? Three great size bedrooms
- ? Master bedroom with walk in robe and ensuite
- ? Central bathroom and separate toilet
- ? Modern open plan kitchen, meals and living area
- ? 2nd living/work from home space acquired from half the garage
- ? Outdoor entertaining area
- ? Low maintenance gardens both front and back
- ? Quality appointments include ducted heating and split

**Price** : \$ 565,000  
**Land Size** : 275 sqm  
**View** : <https://www.ypa.com.au/7865830>

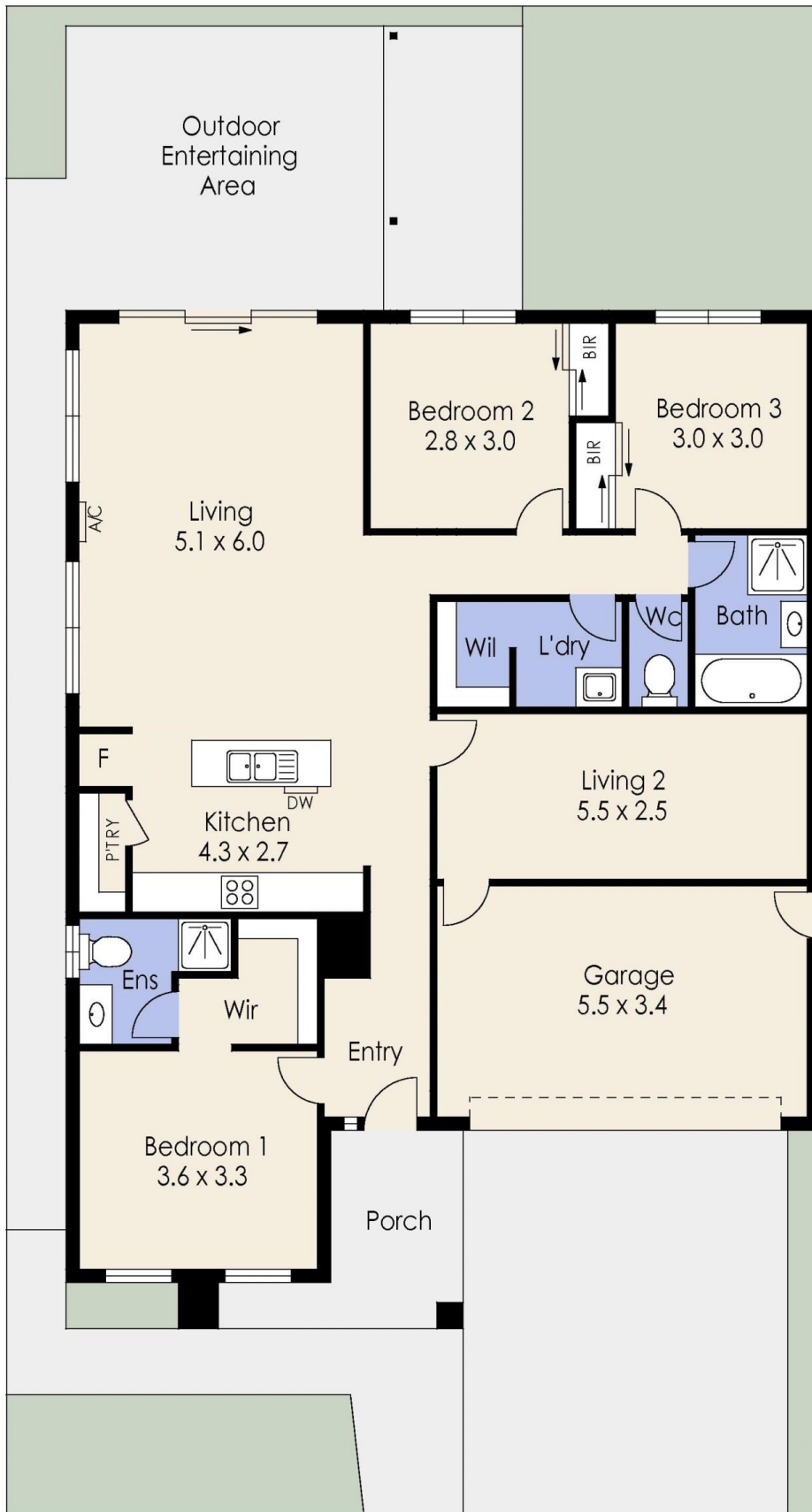


**Mitch Smit**  
0450 913 513



**James Christou**  
0450 733 302

# 4 Colchester Drive, WERRIBEE



Whilst every attempt has been made to ensure the accuracy of the floor plan contained here, measurements of doors, windows, rooms and any other items are approximate and no responsibility is taken for any error, omission, or mis-statement. This plan is for illustrative purposes only and should be used as such by any prospective purchaser. The services, systems and appliances shown have not been tested and no guarantee as to their operability or efficiency can be given.