

13 Clarke Street Darley VIC

3 2 2

Welcome to 13 Clarke Street, Darley - a residence that epitomizes exclusive living in the most sought-after area of Darley and Bacchus Marsh. This stunning Exclusive Homes build is nestled in a perfect little pocket, situated on a no-through road with a charming park directly across the street.

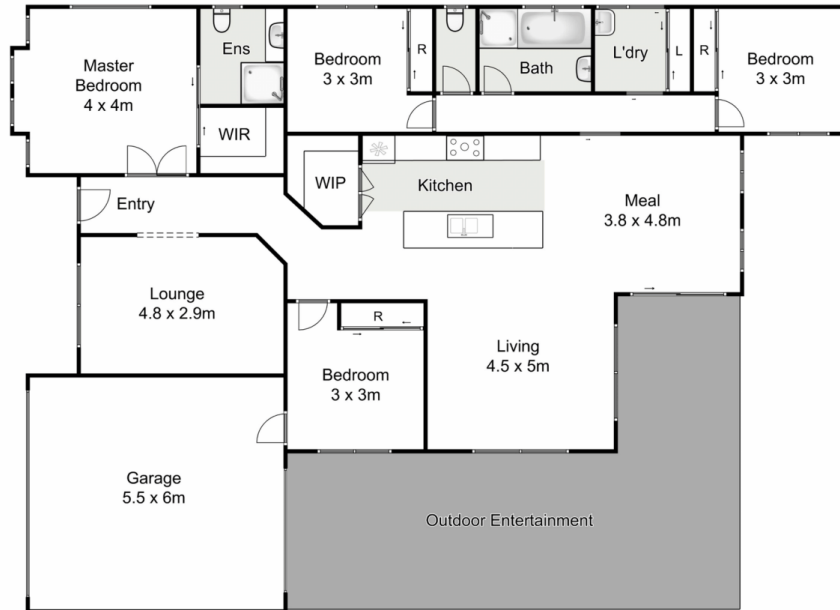
The allure of this property extends beyond its prime location, with an allotment size of 761m² providing ample space and drive-through access from the double garage-ideal for those seeking secure storage for trailers, boats, and more.

Step inside this beautifully designed home to discover three bedrooms, each thoughtfully appointed, with the master featuring a walk-in robe and ensuite, while the remaining bedrooms boast built-in robes. A separate study, complete

Price : \$ 787,000
Land Size : 760 sqm
View : <https://www.ypa.com.au/7865459>



Jodi Nash
0419 342 120



13 Clarke Street, Darley

Ypa

Whilst every attempt has been made to ensure the accuracy of the floor plan contained here, measurements of doors, windows, rooms and any other items are approximate and no responsibility is taken for any error, omission, or mis-statement. This plan is for illustrative purposes only and should be used as such by any prospective purchaser. The services, systems and appliances shown have not been tested and no guarantee as to their operability or efficiency can be given.

