



125 Edwardson Drive Coomera QLD

4 2 2

Welcome to 125 Edwardson Drive, Coomera - where sophistication meets convenience in this modern haven. This exquisite two-story residence, built just four years ago, invites you into a world of refined living.

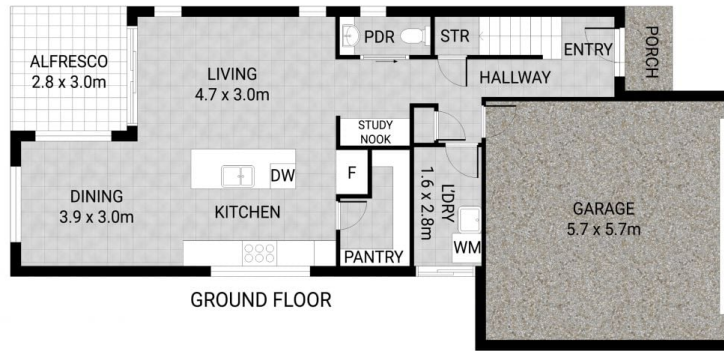
Step inside to discover a thoughtfully designed ground floor featuring open-plan living and dining areas, seamlessly connected and overlooked by a stylish kitchen boasting stone benchtops and 900 mm stainless steel appliances. A walk-in pantry, soft-closing cabinets, and a dishwasher add a touch of practical luxury. A convenient study nook, powder room, and understairs storage enhance the functionality of the space.

Upstairs, find a masterfully crafted layout with a media room and all bedrooms, including the grand master bedroom with walk-in robes and ensuite. Zoned air

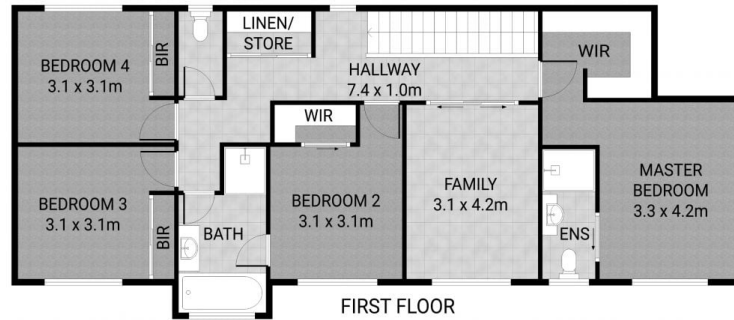
Land Size : 579 sqm
View : <https://www.ypa.com.au/7861390>



Steven Spiteri
0423 428 079



GROUND FLOOR



FIRST FLOOR