



28 Goldsworthy Drive Fraser Rise VIC

3 2 2

Don't miss out on this incredible opportunity to own a home in the highly rated suburb of Fraser Rise, where property prices are still skyrocketing! This immaculate family home offers everything you could desire with its simple yet impressive features which makes it the perfect choice.

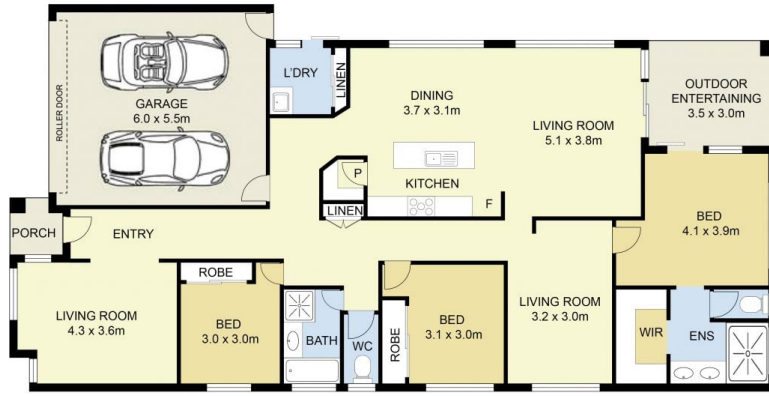
Price : \$ 767,500
Land Size : 400 sqm
View : <https://www.ypa.com.au/7856313>

Comprising of the following;

- ? Master bedroom showcasing a walk-in wardrobe and full ensuite including double vanities with quality fixtures & fittings
- ? Additional two spacious bedrooms with built-in wardrobes
- ? Separate front formal lounge
- ? Kids retreat or theatre room or potential fourth bedroom
- ? The open plan kitchen is located perfectly to incorporate the meals and family space
- ? Kitchen complete with ample cupboard space, Caesar stone benchtops, walk in pantry, stainless steel appliances



Joel Rawle
0416 165 473



28 Goldsworthy Drive, Fraser Rise



DISCLAIMER : ALL DIMENSIONS ARE AN APPROXIMATION ONLY AND NO GUARANTEE IS GIVEN WITH RESPECT TO ACCURACY.