

## 22 Anchorage Avenue Safety Beach VIC

4 2 2

LONG SETTLEMENT PREFERRED - INSPECT BY PRIVATE APPOINTMENT

Introducing a residence that effortlessly merges luxury with everyday functionality, creating an authentic haven for comfortable and stylish living. Here's a glimpse of what this thoughtfully designed home has to offer:

? Spacious Bedrooms: 4 generously sized bedrooms provide ample room for the entire family.

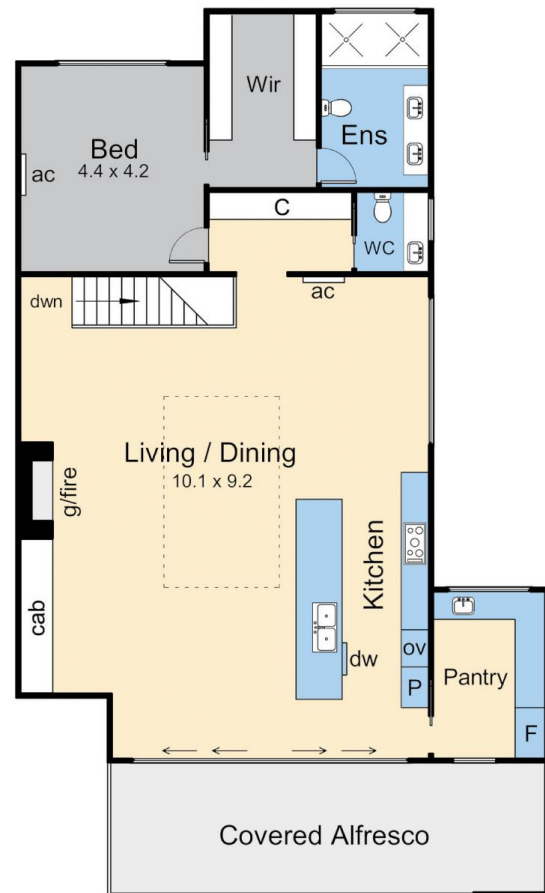
? Master Suite: Experience a private retreat in the master suite, featuring a walk-in robe and ensuite, combining elegance with practicality.

? Modern Kitchen: Step into a modern and luxurious kitchen with impressive finishes, seamlessly connected to a practical butler's

**Price** : \$1,799,000 - \$1,899,000  
**Land Size** : 276 sqm  
**View** : <https://www.ypa.com.au/7855253>



**Michael Dimech**  
**0417 399 511**



## Upper Floor

Anchorage Avenue

## Lower Floor

This floorplan is for illustration purposes only and no warranty is given to its accuracy. Purchasers are advised to carry out their own investigations. Produced by **realitywriters** (03) 5970 2222