



### 38 Mantello Drive Werribee VIC

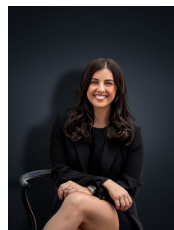
An extremely rare & very impressive 748m<sup>2</sup> (approximate.) block! Located a mere 650m away from the Werribee racecourse, 2km from Watton Street, Werribee, 2.8km away from the prestigious Eagle Stadium and a stone's throw away from local shops.

This MASSIVE block is centrally located and is the perfect opportunity to build the home of your dreams. Don't miss out on this great opportunity, enquire today!

(PHOTO ID REQUIRED AT OPEN FOR INSPECTION)

At YPA Estate Agents 'our service will move you

**Price** : \$ 470,000  
**Land Size** : 748 sqm  
**View** : <https://www.ypa.com.au/7854090>



**Kirsty Cunningham**  
 0414 344 475



**James Christou**  
 0450 733 302