



## 43 Kareela Drive Tootgarook VIC

4 3 5

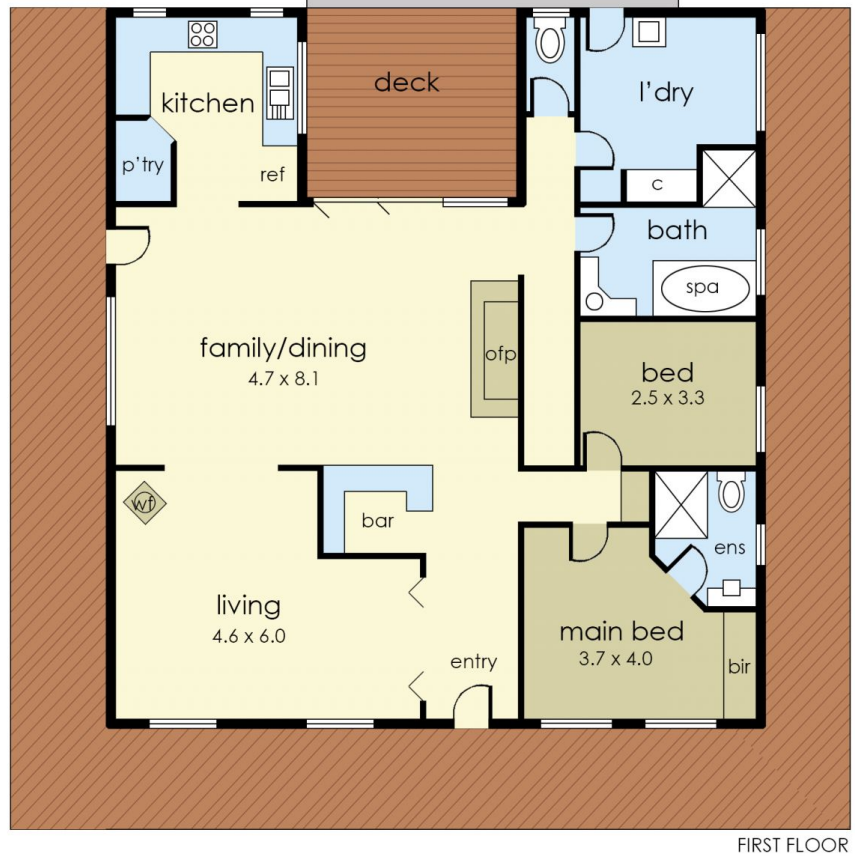
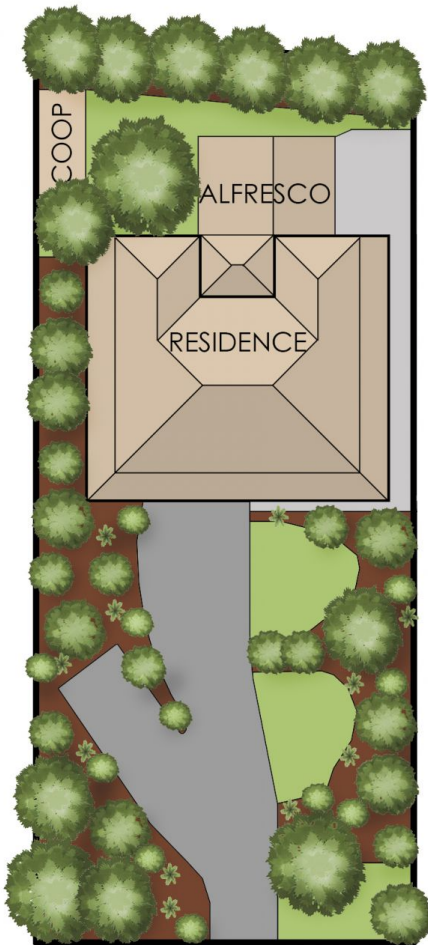
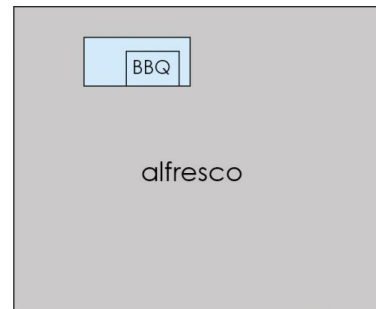
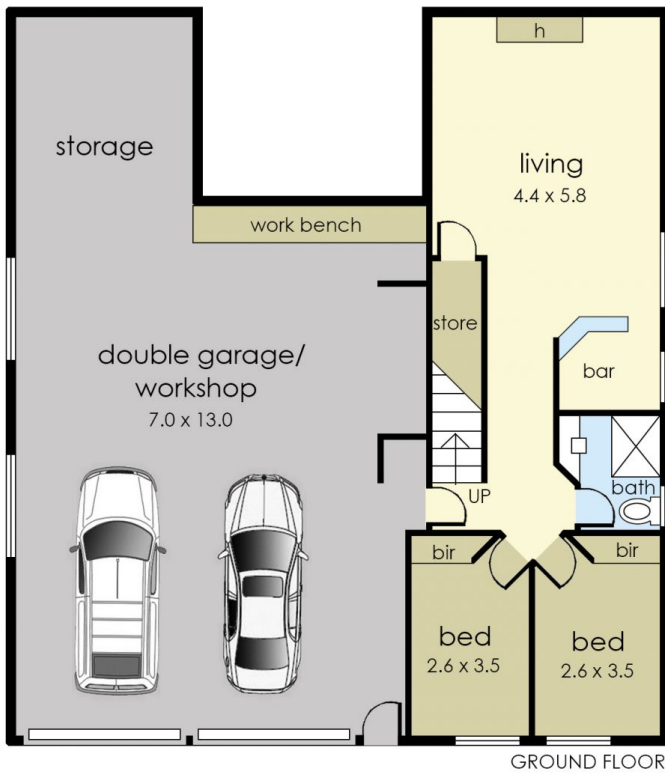
Presenting a spacious floorplan spread across two generous levels, and grand proportions at every turn, this gorgeous family home positioned on a large allotment of approximately 1,161\*m2 will be sure to impress and delight.

Offering comfortable accommodations including four bedrooms (primary bedroom featuring ensuite and built-in-robe), three bathrooms, three spacious living rooms featuring multiple wet bars, a wood burning fire, plus a stunning open fireplace with grand stone hearth and surround, this incredible property also offers ample storage, central heating, wraparound veranda which enjoys beautiful garden and bay views, plus a huge double garage & workshop with additional rear storage (or space for an additional car).

**Price** : \$ 1,180,000  
**Land Size** : 1161 sqm  
**View** : <https://www.ypa.com.au/7851796>



**Jade Springer**  
0437 410 791



## 43 Kareela Drive, Tootgarook

This floorplan is for illustration purposes only and no warranty is given to its accuracy. Purchasers are advised to carry out their own investigations.