

### 3 Hatfield Street Strathtulloh VIC

3  2  2 

Situated in the heart of Strathtulloh and close by to Strathtulloh Primary School, Cobblebank Train Station, Cobblebank Athletics Track, Cobblebank Village and the future Melton Hospital, this great home is perfect for any savvy buyer looking for their first home, investment or downsize.

Out front, you are first greeted with an elegant modern façade and exceptionally neat, low-maintenance landscaping that immediately grabs attention and sets the tone for the attention to detail we would expect from the perfect family home.

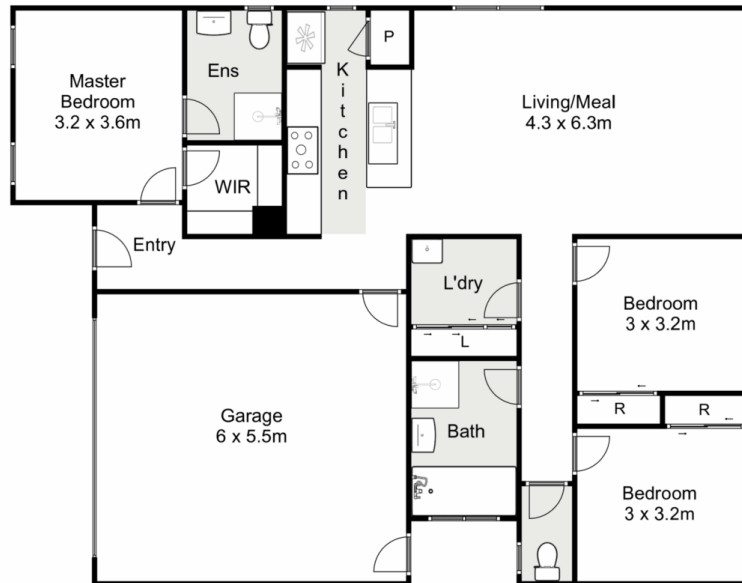
At the front of this great floorplan, you are greeted by the master bedroom complete with walk in robe and bright ensuite. The remaining two bedrooms are all built in robes and are serviced by a stunning central bathroom.

**Price** : \$ 555,000

**View** : <https://www.ypa.com.au/7851245>



**Monty Tyagi**  
0435 896 907



### 3 Hatfield Street, Strathulloh

ypa

Whilst every attempt has been made to ensure the accuracy of the floor plan contained here, measurements of doors, windows, rooms and any other items are approximate and no responsibility is taken for any error, omission, or mis-statement. This plan is for illustrative purposes only and should be used as such by any prospective purchaser. The services, systems and appliances shown have not been tested and no guarantee as to their operability or efficiency can be given.

