

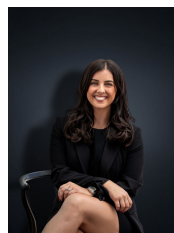


42 Azure Drive Tarneit VIC

4 🛏 2 🚿 2 🚗

Located amongst quality homes, this stunning property with modern décor is sure to suit the fussiest of buyers and is move in ready! Located within the Claremont Park estate you are provided with access to the facilities including the community centre, tennis courts, gym & pool. Located within walking distance bus stops & parklands, within a short drive to freeway access, local shops including Tarneit Gardens SC, Riverdale Village, Tarneit Central SC, Wyndham Village SC and also Pacific Werribee, this home is central to it all! Surrounding schools include: Islamic College of Melbourne school, Davis creek primary school, Good News school and also Thomas Carr college & Bethany Primary school. The open plan design has been very well thought out and offers;

Price : \$ 730,000
Land Size : 561 sqm
View : <https://www.ypa.com.au/7847736>



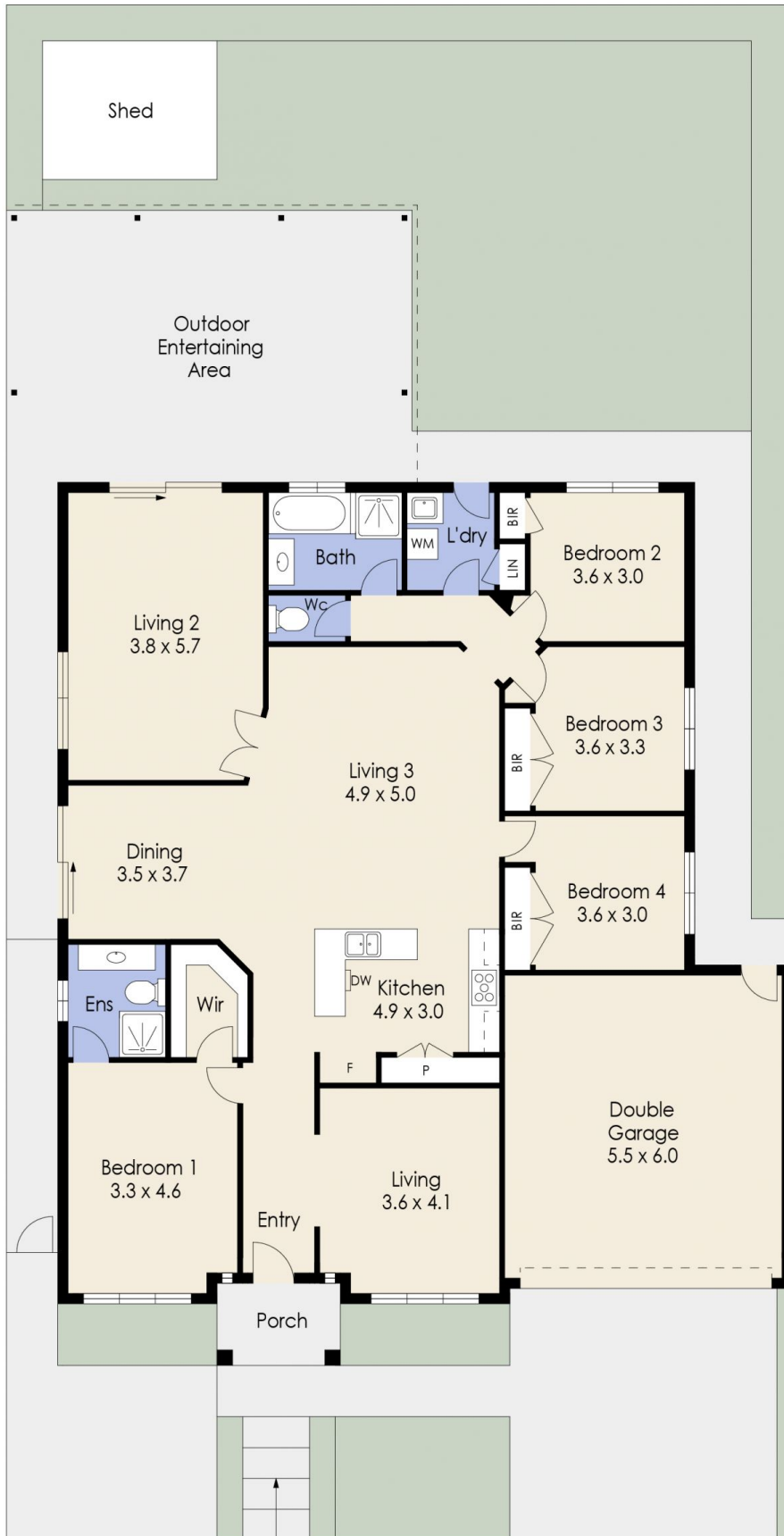
Kirsty Cunningham
0414 344 475



Abdul Merabi
0424 263 506

? Four spacious bedrooms

42 Azure Dr, Tarneit



Whilst every attempt has been made to ensure the accuracy of the floor plan contained here, measurements of doors, windows, rooms and any other items are approximate and no responsibility is taken for any error, omission, or mis-statement. This plan is for illustrative purposes only and should be used as such by any prospective purchaser. The services, systems and appliances shown have not been tested and no guarantee as to their operability or efficiency can be given.