



1/15 Castella Court MEADOW HEIGHTS VIC

3 1 1

Buyers looking to purchase their first home, investment opportunity or property to make your own and move in early 2024 look no further! This spacious street frontage unit is ideally located only a short walk to the Coolaroo Train Station, several bus stops, local schools, shops and places of worship.

It will accommodate anyone who appreciates low maintenance living, good sized living and resting quarters as well as the convenience of prime locality.

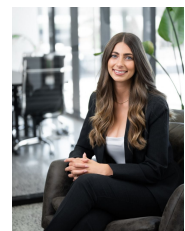
Offering:

- ? 3 Spacious bedrooms, all with built-in robes
- ? Formal living area
- ? Great size kitchen with recently updated stainless steel appliances
- ? Adjoining meals area / family living zone
- ? Two-way central bathroom

Price : \$ 440,000
Land Size : 301 sqm
View : <https://www.ypa.com.au/7844927>



Ali Faour
0432 273 353



Melissa Abela
0405 264 150