



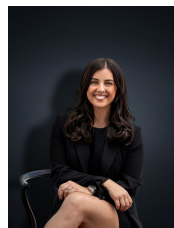
6 Pratham Street Tarneit VIC

Uncover the possibilities awaiting you at 6 Pratham St, Tarneit - an expansive 400m² vacant block located within the sought-after Newhaven Estate.

Situated close by to reputable schools, parklands, this prime opportunity provides easy access to major shopping centres, childcare, and the well-connected Tarneit train station just 3km away (Approx.).

Anticipate the future with excitement as amenities like the upcoming Tarneit West train station and the Riverdale shopping centre, featuring a mix of local shops, promising a lifestyle that seamlessly blends convenience and comfort.

Price : \$400,000
Land Size : 400 sqm
View : <https://www.ypa.com.au/7844642>



Kirsty Cunningham
 0414 344 475



Abdul Merabi
 0424 263 506