



54 Labilliere Street Maddingley VIC

3 1 1

An affordable home, located within walking distance to schools, shops, train station and the Werribee River, 54 Labilliere Street is definitely a home well worth looking at. Featuring 3 sizeable bedrooms all with built in robes and a two way bathroom from the master bedroom to the hallway. An open plan kitchen and dining area along with a large living room filled with loads of natural light.

The outdoor entertainment space is very sizeable and is great for entertaining family and friends. Other features include ducted heating, split system cooling, single lockup garage, potential for side access & a great sized backyard. Situated on a 692sqm block of land.

(Photo ID is Required at all Open For Inspections)

At YPA Bacchus Marsh Our Service Will Move You

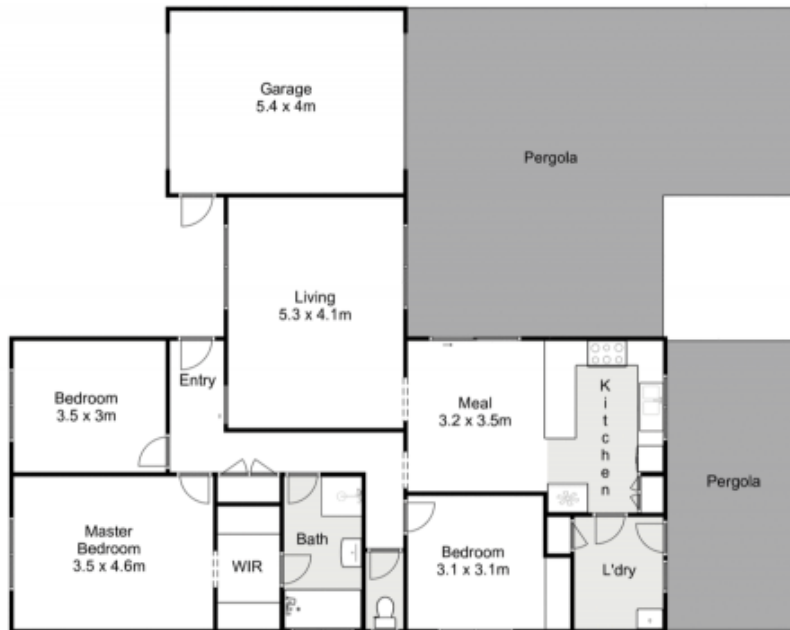
Price : \$579,000 - \$599,000
Land Size : 691 sqm
View : <https://www.ypa.com.au/7842283>



Vickie Ramon
0403 194 621



Mark Edwards
0422 017 068



54 Labilliere Street, Maddingley



Whilst every attempt has been made to ensure the accuracy of the floor plan contained here, measurements of doors, windows, rooms and any other items are approximate and no responsibility is taken for any error, omission, or mis-statement. This plan is for illustrative purposes only and should be used as such by any prospective purchaser. The services, systems and appliances shown have not been tested and no guarantee as to their operability or efficiency can be given.

