



## 10 Shiraz Court Sunbury VIC

4  2  4 

Discover the epitome of luxury living in the prestigious Rolling Meadows Estate, right on the edge of Sunbury's most exciting developments. This remarkable property presents an unparalleled opportunity to embrace a lifestyle of unparalleled convenience and comfort. With a sprawling 800m<sup>2</sup> (approx.) block, you have ample space to create your dream oasis, perhaps even with the addition of an inground swimming pool.

Inside, the family will relish the abundance of space, with three separate living zones offering versatility for every member. The spacious master suite is a true retreat, boasting an ensuite with a double sink vanity, a spa bath, and a walk-in robe. Just across from the master, a large front living area awaits, perfect for parents to unwind and relax.

**Price** : \$ 835,000  
**Land Size** : 800 sqm  
**View** : <https://www.ypa.com.au/7835168>

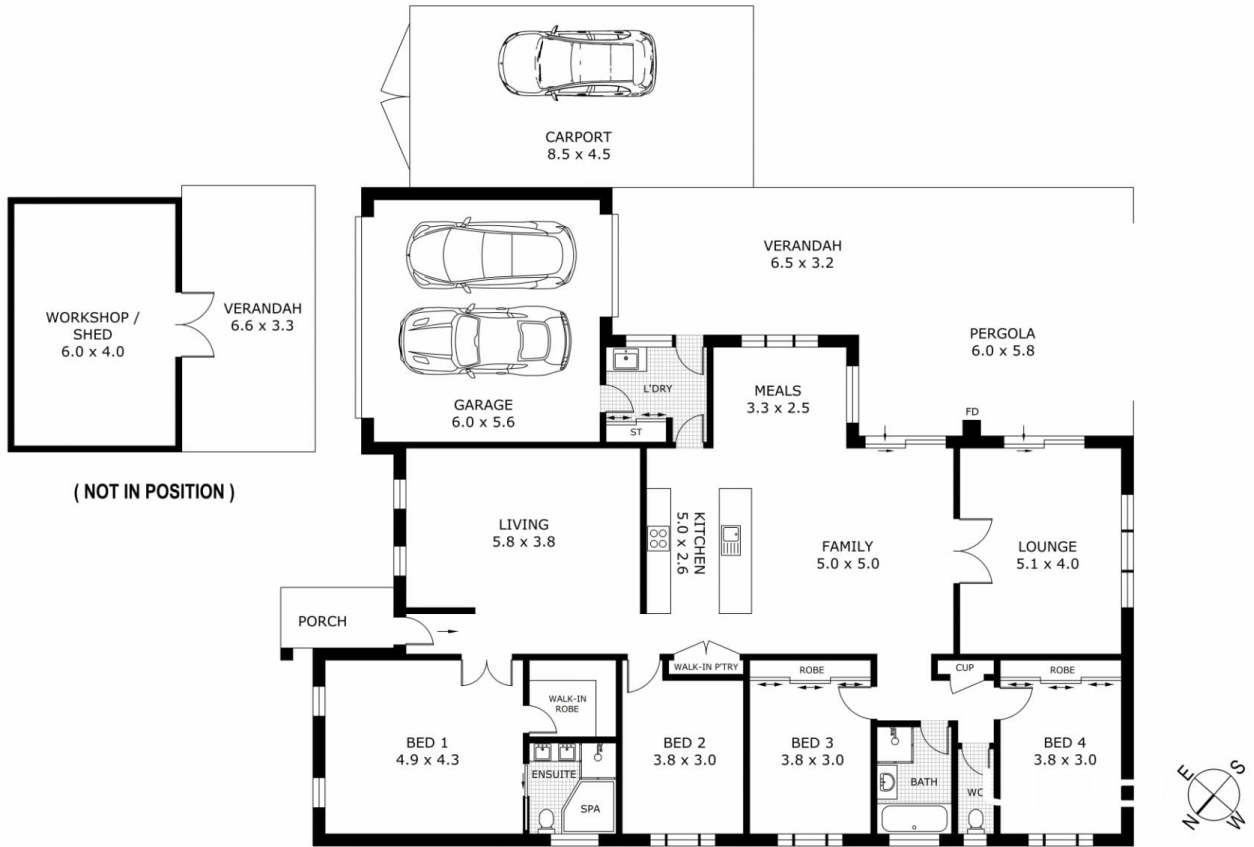


**Lisa Totaro**  
0410 144 215



**Cassandra Doria**  
0497 972 028

10 Shiraz Court, Sunbury



Disclaimer: All images, views and diagrams are indicative only. Dimensions, areas and landscape are indicative and subject to change without notice. Purchasers should check the plans and specifications included in the terms of the contract of sale carefully prior to signing the contract.