



10 Kiama Court Rye VIC

3 1 1

Nestled peacefully at the bowl of a court on a private, elevated allotment of approximately 778*m2, this quaint weekend escape represents an exciting opportunity to enter the coveted Rye market at an entry level price!

Price : \$ 715,000
Land Size : 778 sqm
View : <https://www.ypa.com.au/7830081>

Offering uninterrupted, never to be built out views across the treetops and beyond, this very special beach house has been lovingly cared for by the current owners for over 24 years and is now ready for a new owner.

Spacious and functional, the home presents three great sized bedrooms, large central bathroom, separate laundry room and toilet, and an open plan kitchen, living, and dining, plus a spacious merbau deck which wraps around the rear of the home.

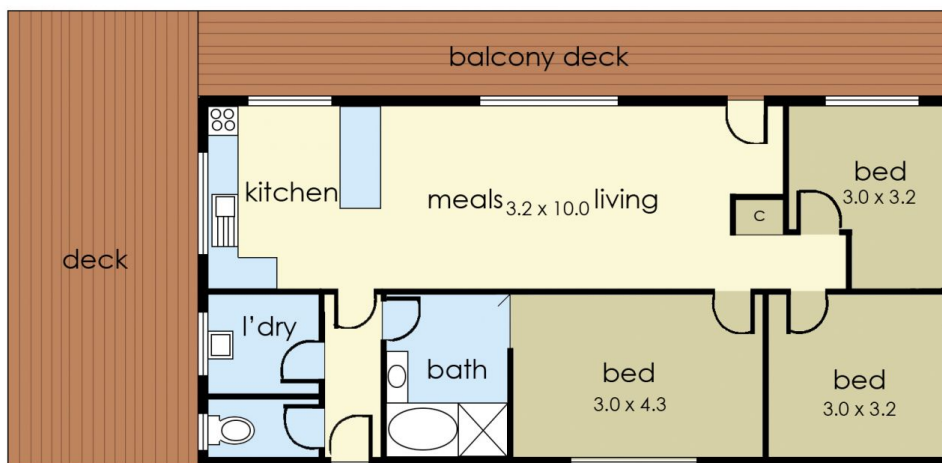
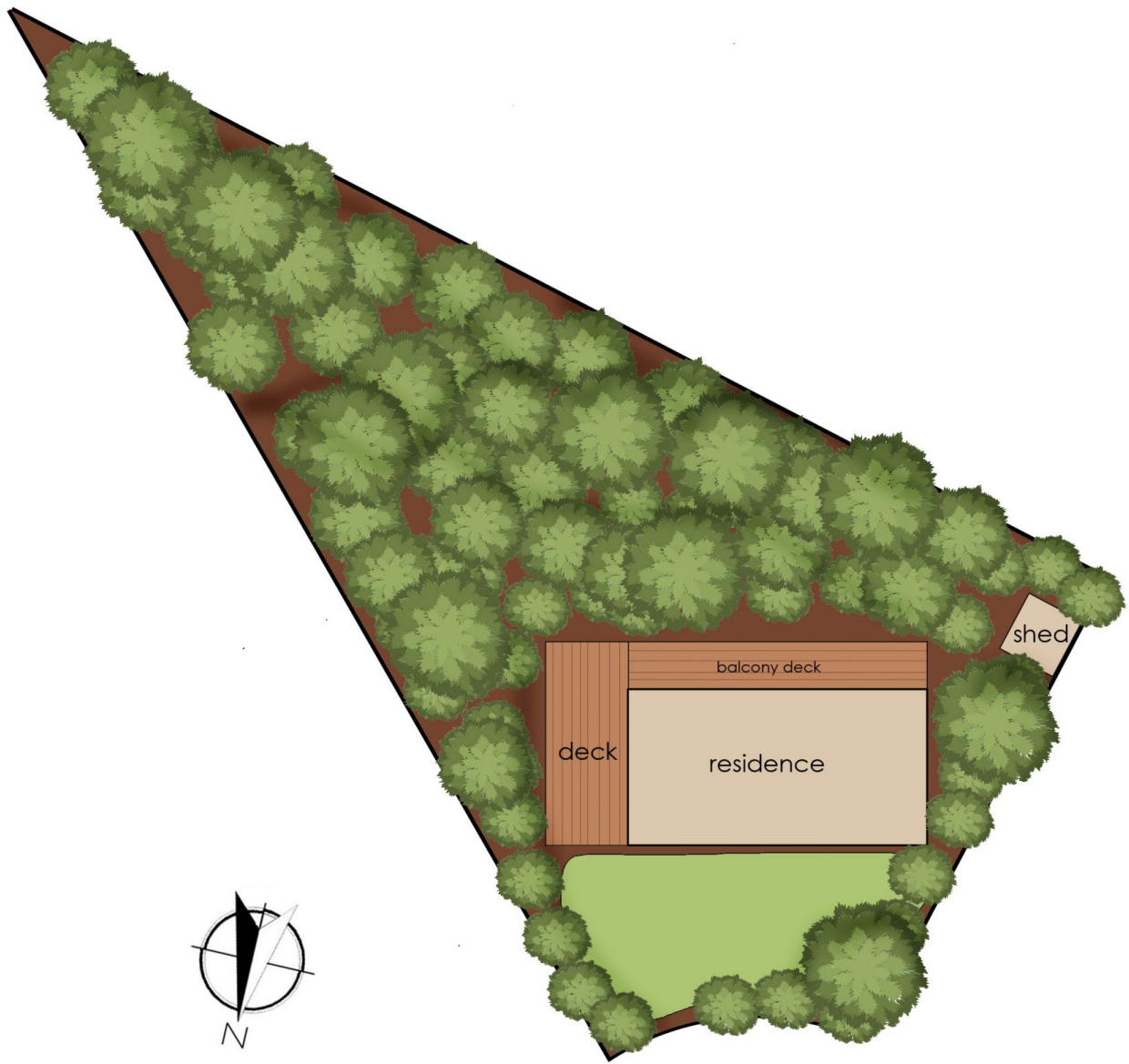


Tony Talarico
0420 778 401



Katrina Talarico
0420 778 404

The coastal gardens have already been tiered with timber



10 Kiama Court, Rye

This floorplan is for illustration purposes only and no warranty is given to its accuracy. Purchasers are advised to carry out their own investigations.