



20 Madison Drive Brookfield VIC

4 2 8

This meticulously maintained and well-constructed home, located in the tranquil suburb of Brookfield, presents a rare opportunity not to be overlooked. Positioned on an expansive 997m² (approx.) allotment in a prestigious neighborhood, this unique property offers abundant space and numerous upgrades for buyers.

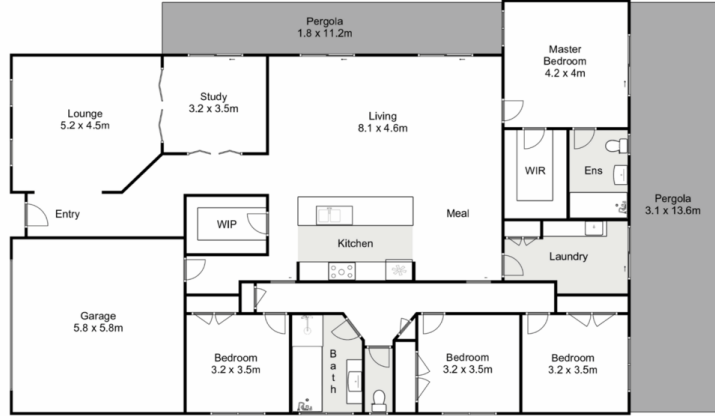
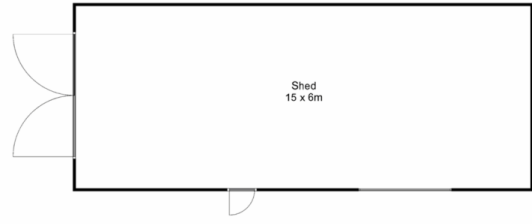
Comprising four generously sized bedrooms, including a spacious master with a walk-in robe and ensuite, this residence caters effortlessly to family living. The remaining bedrooms are serviced by a central bathroom and feature ample storage and natural light.

The formal living area is thoughtfully designed to maximize space and comfort, offering a versatile layout that includes a study area separated by a bi-fold door. The stunning kitchen is a focal point, boasting a large island bench,

Price : \$ 815,000
Land Size : 997 sqm
View : <https://www.ypa.com.au/7826646>



Monty Tyagi
0435 896 907



20 Madison Drive, Brookfield



Whilst every attempt has been made to ensure the accuracy of the floor plan contained here, measurements of doors, windows, rooms and any other items are approximate and no responsibility is taken for any error, omission, or mis-statement. This plan is for illustrative purposes only and should be used as such by any prospective purchaser. The services, systems and appliances shown have not been tested and no guarantee as to their operability or efficiency can be given.

