



## 2 Officer Court Sunbury VIC

3 2 2

Welcome to this charming 3-bedroom home nestled in the heart of the family-friendly Killara Estate. With its prime location and an array of desirable features, this property is sure to captivate both first-time buyers, investors and growing families.

Positioned on a generous 648m<sup>2</sup> block (approx.), this home offers more than just comfortable living; it provides an exceptional lifestyle. As you step inside, you'll be greeted by an abundance of natural light that fills every corner of the house, creating a warm, inviting feel with beautiful views throughout.

The heart of this home is undoubtedly the free-flowing kitchen and meals area, which boasts ample storage and bench space. The layout of the home also offers multiple living options, ensuring that there's room for everyone!

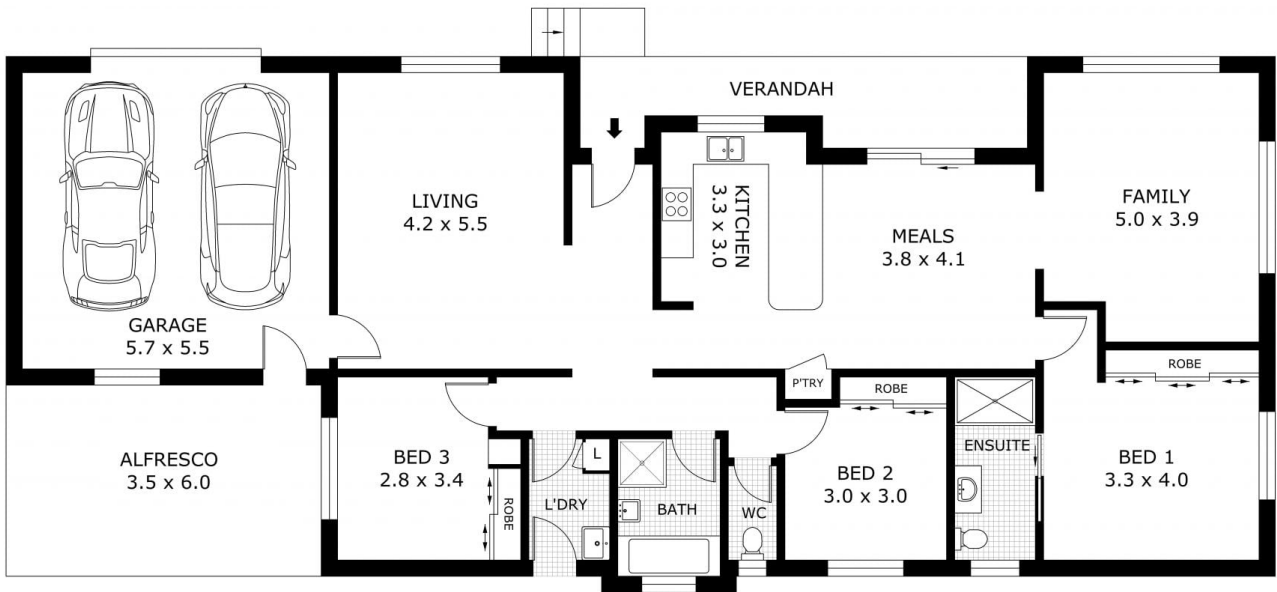
**Price** : \$ 600,000  
**Land Size** : 648 sqm  
**View** : <https://www.ypa.com.au/7823372>



**Cassandra Doria**  
0497 972 028



**Lisa Totaro**  
0410 144 215



Disclaimer: All images, views and diagrams are indicative only. Dimensions, areas and landscape are indicative and subject to change without notice. Purchasers should check the plans and specifications included in the terms of the contract of sale carefully prior to signing the contract.