



## 14 Hoosier Road Clyde North VIC

4  2  2 

Step into the realm of sophistication and contemporary living in the picturesque Bloom estate. This 4-bedroom, 2-bathroom residence is tailored for modern family life, boasting a suite of upscale features. Highlights encompass a private retreat, a vast alfresco space, seamless indoor/outdoor integration, and an exquisite master suite.

The central living area exudes an expansive and open ambiance, accentuated by wall-to-wall glass sliding doors that effortlessly extend the interior living space outdoors, creating a harmonious blend of indoor and outdoor living. Beautiful wooden floors, neutral hues, and downlights contribute to a serene and welcoming atmosphere. The chef's dream kitchen is adorned with a butler's pantry, pristine white countertops with a breakfast bar, and top-of-the-line stainless-steel appliances. Flowing seamlessly into the cozy lounge and formal dining area, it

**Land Size** : 448 sqm  
**View** : <https://www.ypa.com.au/7819113>

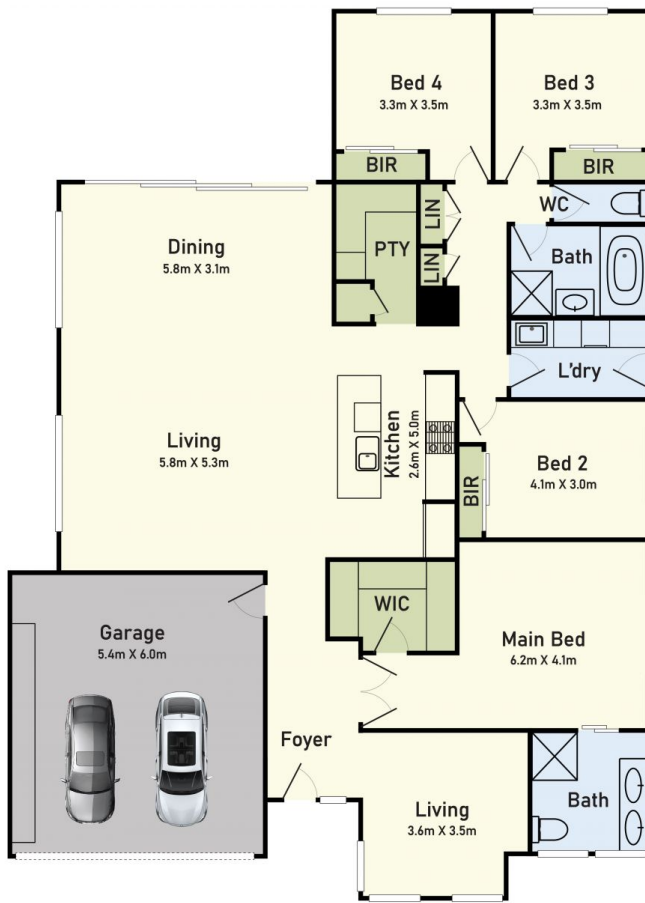


**Khushboo Joshi**  
0432 539 506

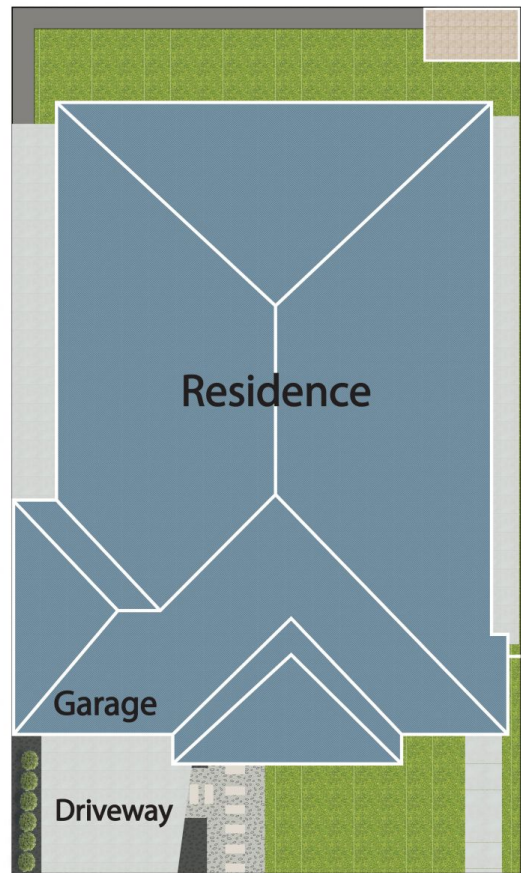


**Ratnakar Panigrahi**  
0425 794 659

## Floor Plan



## Site Plan



# 14 Hoosier Road, Clyde North

\* Dimensions are approximate and for illustrative purposes only

