



## 5 Connata Place Harkness VIC

3 2 2

Located in the sought-after suburb of Harkness, this park facing property sits in close proximity to schools of all levels, parks, walking tracks and only a short drive to Woodgrove Shopping Centre and Western Freeway Access. With open space from your front door, this property ticks all the boxes for first home buyers and investors alike!

Leading up to the front door you are welcomed by a stunning low maintenance yard, the red brick creates a feeling of home as the front porch with feature timber leads you to the front door. Upon entering you are greeted by the 9-foot ceilings that flow throughout the home, and the VJ Wall panelling that extends down the hallway. The front of the home hosts a lounge room which features a ceiling fan and plenty of space creating an ideal area for the family to relax and enjoy.

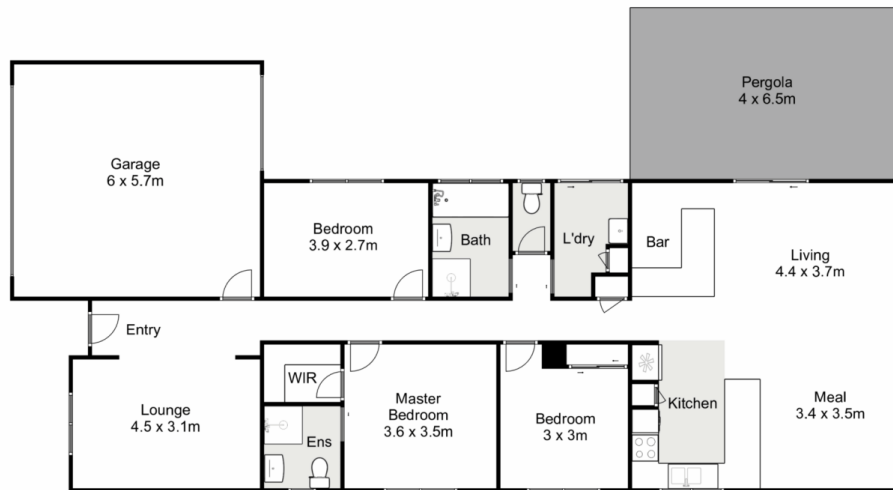
**Price** : \$ 541,000  
**Land Size** : 471 sqm  
**View** : <https://www.ypa.com.au/7816898>



**Shane Spiteri**  
0488 980 115



**Ricky Frew**  
0402 007 100



## 5 Connata Place, Harkness

Ypa

Whilst every attempt has been made to ensure the accuracy of the floor plan contained here, measurements of doors, windows, rooms and any other items are approximate and no responsibility is taken for any error, omission, or mis-statement. This plan is for illustrative purposes only and should be used as such by any prospective purchaser. The services, systems and appliances shown have not been tested and no guarantee as to their operability or efficiency can be given.

