



## 22 Grevillea Crescent Hoppers Crossing VIC

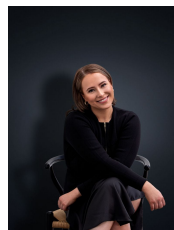
3 2 2

One lucky family has this exciting opportunity in securing a rare property where Skeleton Creek is truly your backyard. Situated in the highly sought after Bellbridge estate and set on an impressive 709m<sup>2</sup> approx allotment, the home is surrounded by all the families' essential amenities including, schools, shops, public transport, walking tracks and easy access to the M1 freeway.

**Land Size** : 709 sqm  
**View** : <https://www.ypa.com.au/7807191>

### Property Features:

- ? Three bedrooms all with robes
- ? Master bedroom with ensuite
- ? Central bathroom with separate toilet
- ? Spacious open plan kitchen, meals and living arrangement with an abundance of natural light
- ? Updated kitchen with stainless steel appliances and stone bench tops



**Ali Dowling**  
**03 9741 7777**

# 22 Grevillea Crescent, HOPPERS CROSSING



Whilst every attempt has been made to ensure the accuracy of the floor plan contained here, measurements of doors, windows, rooms and any other items are approximate and no responsibility is taken for any error, omission, or mis-statement. This plan is for illustrative purposes only and should be used as such by any prospective purchaser. The services, systems and appliances shown have not been tested and no guarantee as to their operability or efficiency can be given.