

## 7 Bealiba Avenue Weir Views VIC

4 🚗 3 🚗 2 🚗

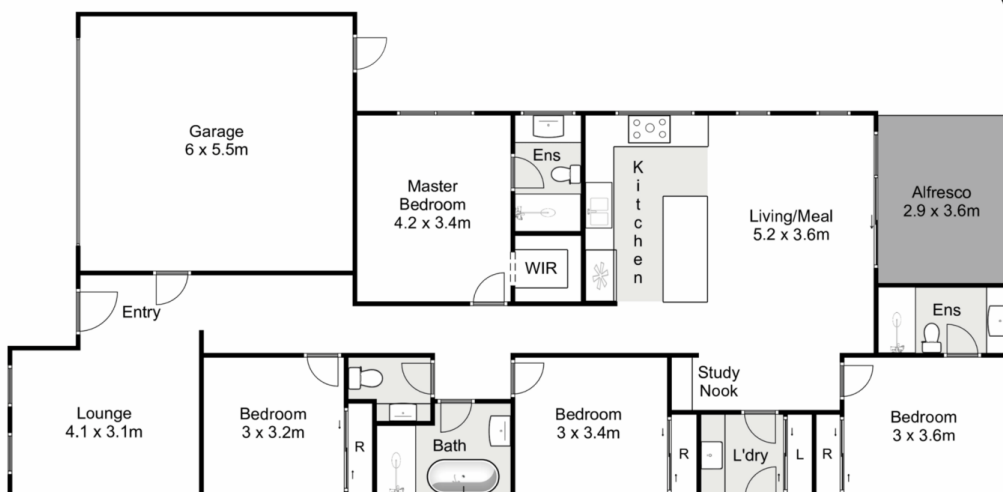
This exciting piece of modern-day architecture, positioned in the highly sought-after pocket of the Toolern Waters estate. Close by to lovely walking trails overlooking the picturesque Melton Weir and all amenities such as Opalia Plaza, Melton South Train Station and schooling of all levels including Staughton College, Saint Anthony's Primary School and Al Iman College. This stunning home has been completed to the true definition of luxury with incredible inclusions and upgrades, this property is a must see due to the detail and quality throughout.

**Land Size** : 384 sqm  
**View** : <https://www.ypa.com.au/7799844>



**Ryan Anders**  
0434 900 300

Upon entering this wonderful home through the upgraded front door, you are greeted by hybrid floorboards, built in hall desk and higher ceilings that flow throughout the home adding to the luxurious feel. The front living area which is great in size offers the perfect space for the family to enjoy.



## 7 Bealiba Avenue, Weir Views

YPA

Whilst every attempt has been made to ensure the accuracy of the floor plan contained here, measurements of doors, windows, rooms and any other items are approximate and no responsibility is taken for any error, omission, or mis-statement. This plan is for illustrative purposes only and should be used as such by any prospective purchaser. The services, systems and appliances shown have not been tested and no guarantee as to their operability or efficiency can be given.

