



11 Louise Street Rye VIC

3 2 4

Positioned on a private, elevated corner allotment and enjoying beautiful views out across Port Phillip Bay, this fantastic three bedroom, two bathroom coastal home offers a variety of exciting options.

With a long list of features including multiple outdoor entertaining areas, a sunny north facing upper level deck which provides peaceful water and tree top views, a double driveway with additional space for boat and caravan accommodation, plus a spacious lower level that could serve as either a huge master retreat, rumpus room, or provide the option for dual living - this home checks every box!

Flooded with natural light and offering a quiet place to escape the daily grind, the home also includes the comfort of gas ducted heating, gas and solar hot water, split system

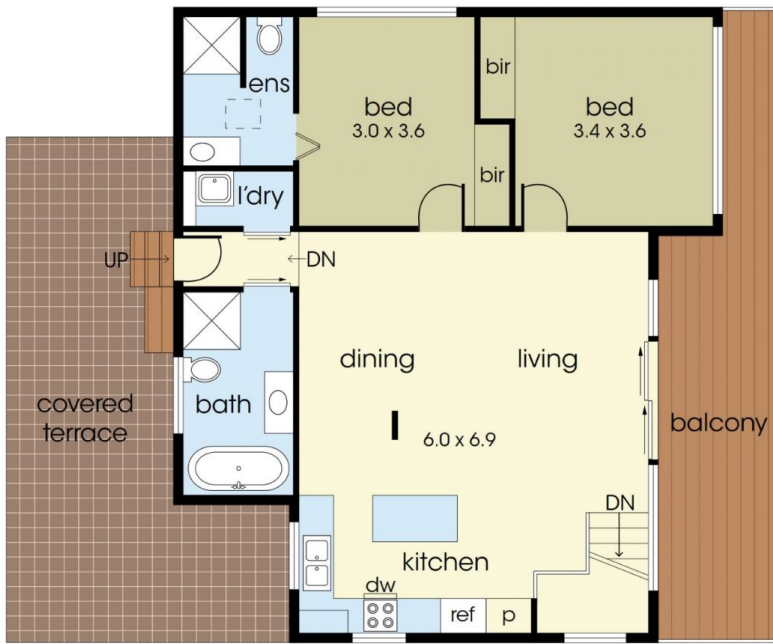
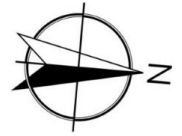
Price : VENDOR SAYS SELL - \$1,050,000 - \$1,100,000

Land Size : 885 sqm

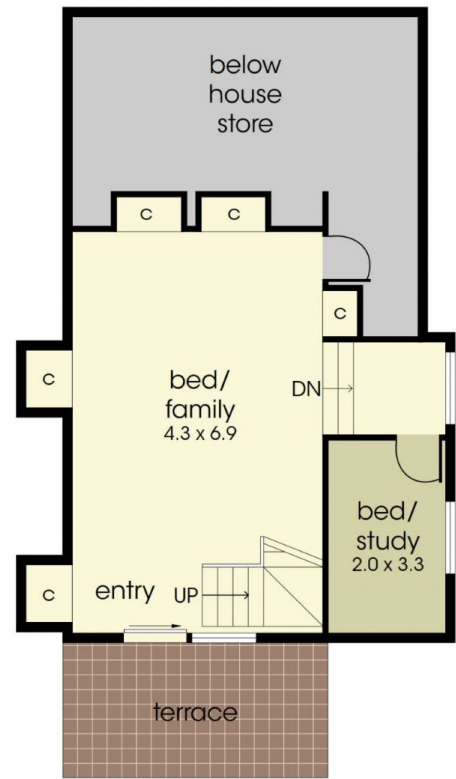
View : <https://www.ypa.com.au/7798479>



Jade Springer
0437 410 791



FIRST LEVEL



ENTRY LEVEL



SITE PLAN

11 Louise Street, Rye

This floorplan is for illustration purposes only and no warranty is given to its accuracy. Purchasers are advised to carry out their own investigations.