

## 16 Reigate Street Caroline Springs VIC

4 2 2

### Large Family Home With Side Access

Nestled in the Grove Estate, this beautiful family home with a versatile floorplan complemented by multiple living zones is waiting for your family to call their own and create memories of a lifetime!

This home comprises three generous sized fitted bedrooms, master with WIR and ensuite, study/4th bedroom. Highlighted with high ceilings upon entry, you are welcomed with a formal living area, flowing into a spacious kitchen with stainless steel appliances, overlooking meals & adjoining family area.

With an impressive side access & well-maintained backyard, get creative and landscape your dream backyard with loads of potential for a pool, room for the boat or caravan or plenty of space for the kids & pets to run around!

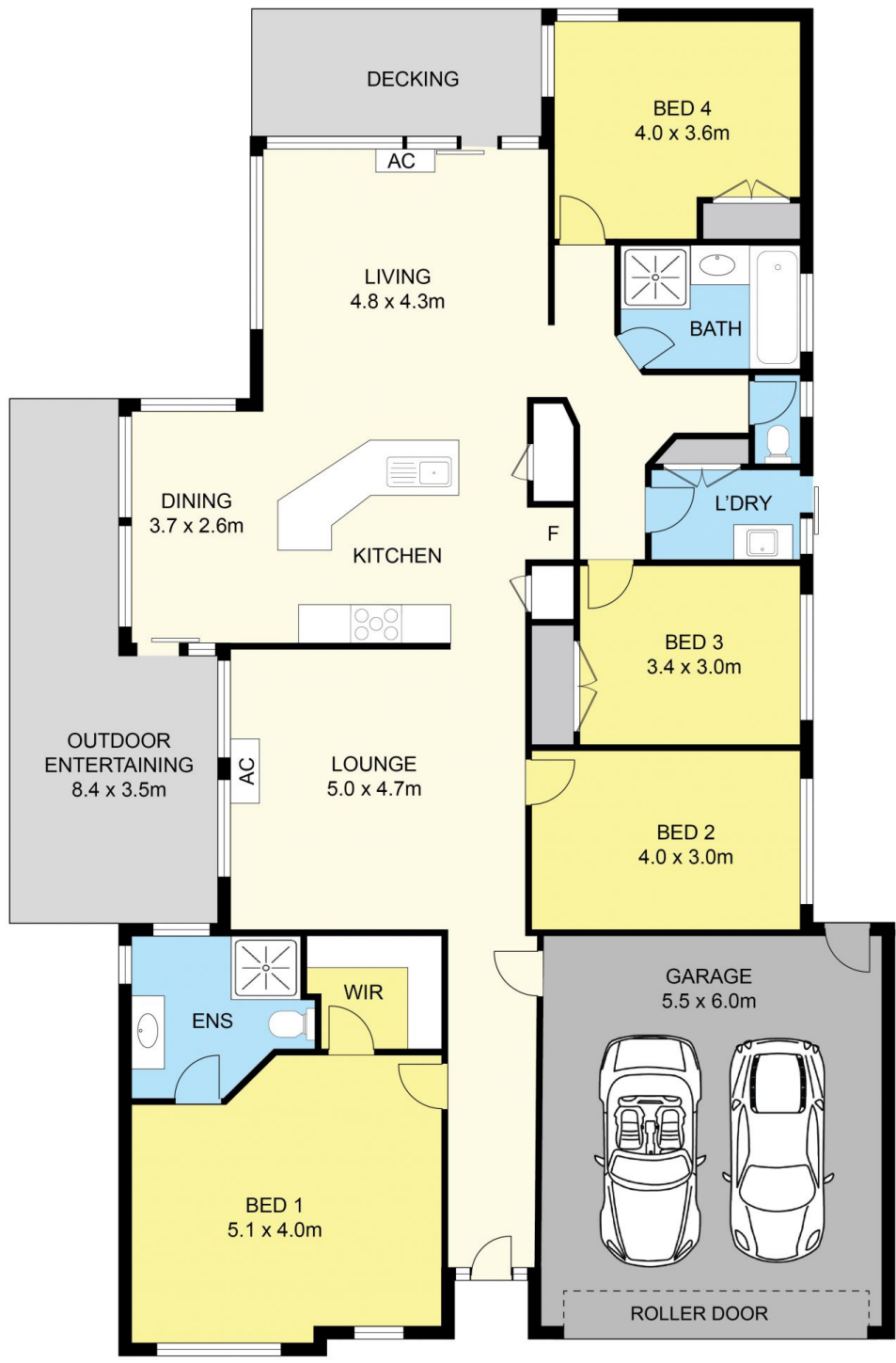
**Price** : \$ 825,000  
**Land Size** : 672 sqm  
**View** : <https://www.ypa.com.au/7793013>



**Peter Colella**  
0421 346 326



**Monique Cukavac**  
0449624617



**16 REIGATE STREET, CAROLINE SPRINGS**

DISCLAIMER  
 PLANS SHOWN ARE FOR MARKETING PURPOSES ONLY. ALL DIMENSIONS ARE APPROXIMATE AND NOT TO SCALE. THEY ARE SUBJECT TO ERRORS AND INACCURACIES AND NO LIABILITY WILL BE ACCEPTED. INTERESTED PARTIES SHOULD MAKE THEIR OWN INQUIRES.