

9 Ingoldsby Court Delahey VIC

4 2 4

LARGE FAMILY RESIDENCE IN A PRIZED LOCATION

This Double Storey Family Home features a floor plan that allows for the whole family to have Space, Comfort and Privacy.

Situated in a private street location within 5 mins walk to school, bus, and parkland, and an easy 5-minute drive to Watergardens Shopping Centre and railway station.

Featuring:

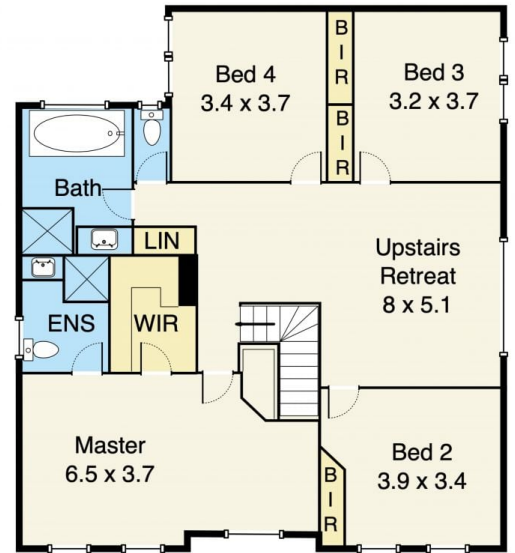
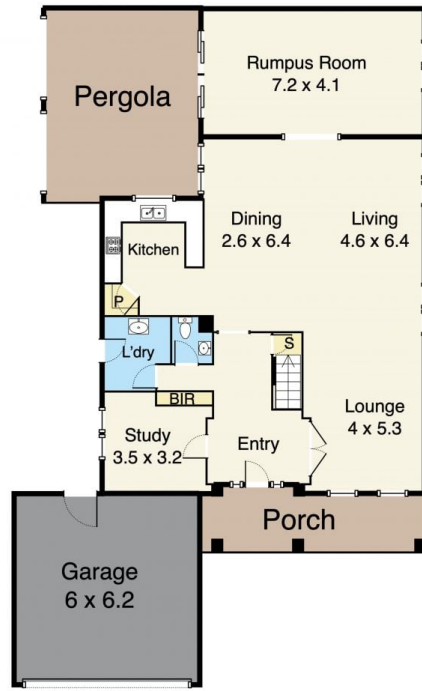
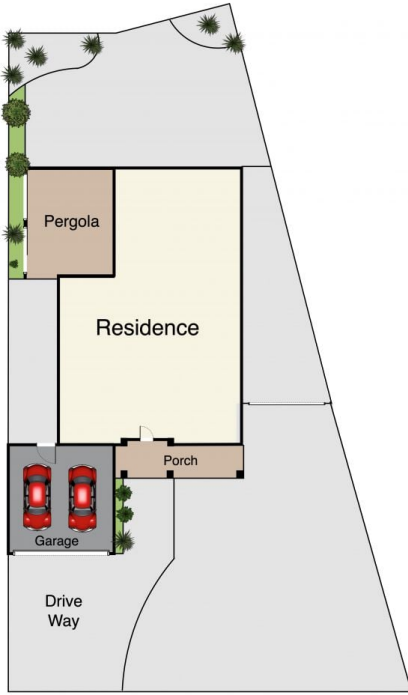
- ? 4 Bedrooms (BIR), master with full ensuite
- ? Spacious light-filled loungeroom with open-plan living
- ? Upstairs you have a private living area or the kids retreat
- ? A kitchen with room to move, pantry, dining & family TV area
- ? Separate family rumpus or billiard room, perfect for a

Price : \$ 800,000
Land Size : 588 sqm
View : <https://www.ypa.com.au/7788950>



Joe Albioli
0438 133 123

Floor Plan



9 Ingoldsby Court, Delahey, VIC - 3037

Ground Floor

First Floor

*This floorplan is for illustration purposes only and no warranty is given to its accuracy. Purchasers are advised to carry out their own investigations.