

## 12 Locksley Street Wendouree VIC

2  1  1 

Seize this exceptional opportunity to acquire a coveted corner allotment nestled in a tranquil street within the area of Wendouree. The current property is leased and is perfectly positioned on a generous corner allotment spanning 602m<sup>2</sup>.

With dual street frontages and an existing crossover/driveway, this property presents an exciting potential for subdivision (STCA). The residence features two bedrooms, a spacious formal lounge, a central bathroom, a well-equipped kitchen with a meals area, and the convenience of split system heating/cooling. Additionally, it includes a carport with convenient drive-through access.

Enjoy the benefits of this strategic location, close to a range of amenities, making it an attractive prospect for astute

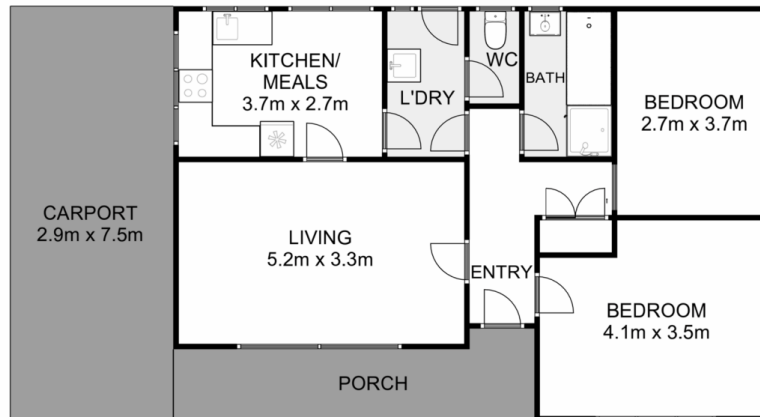
**Price** : \$369,000 - \$399,000  
**Land Size** : 602 sqm  
**View** : <https://www.ypa.com.au/7784125>



**Shane O'Brien**  
0431 766 082



**James Mangan**  
0408 986 482



## 12 Locksley Street, Wendouree

ypa

Whilst every attempt has been made to ensure the accuracy of the floor plan contained here, measurements of doors, windows, rooms and any other items are approximate and no responsibility is taken for any error, omission, or mis-statement. This plan is for illustrative purposes only and should be used as such by any prospective purchaser. The services, systems and appliances shown have not been tested and no guarantee as to their operability or efficiency can be given.

