



## 14 Waterman Drive Clyde VIC

4 2 2

This impressive North facing Burbank ex-display home, nestled on a corner block, boasts all the amenities for luxurious family living in Clyde. With 4 bedrooms, 2 bathrooms, and exquisite design elements, it offers dual living areas, a lavish master suite, an alfresco space, a rumpus room, and a versatile study/home office.

Step into a sunlit and welcoming living area, tailor-made for family gatherings, exuding an air of sophistication. The warm, light wood-style floors lead you to the captivating heart of the home, a feast for the eyes and senses. Neutral muted tones and an open layout create an inviting atmosphere, while expansive windows bring in rays of natural light. The designer kitchen features bright white stone countertops, contemporary cabinetry, a breakfast bar, and top-of-the-line stainless-steel appliances, combining practicality with elegance. It's accompanied by a

**Price** : \$ 1,240,000  
**Land Size** : 656 sqm  
**View** : <https://www.ypa.com.au/7782311>

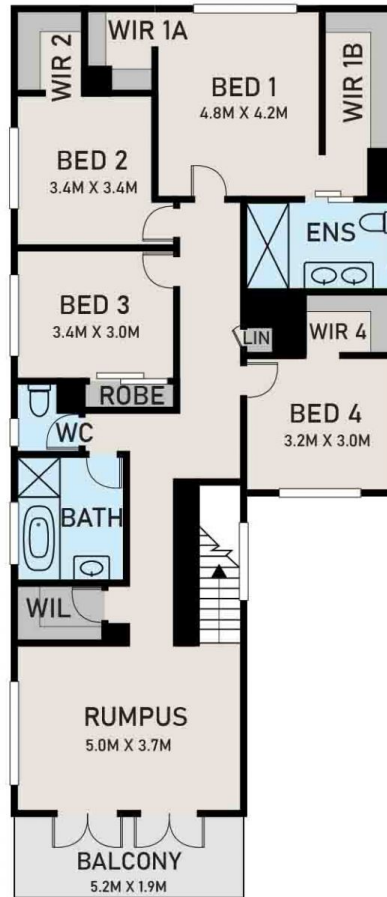


**Kamaljeet Singh**  
**0433 619 387**

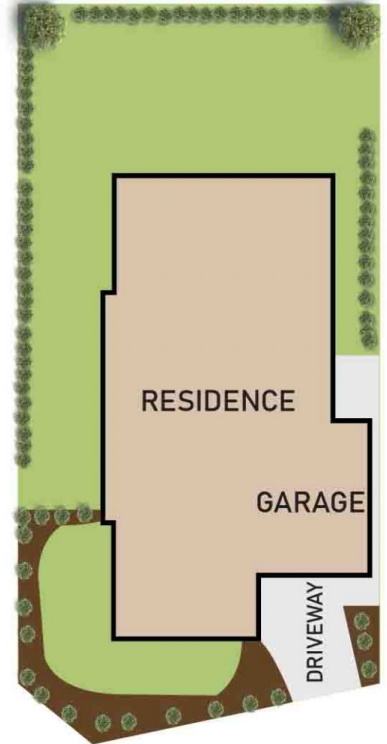
## GROUND FLOOR



## FIRST FLOOR



## SITE PLAN



14 WATERMAN DRIVE, CLYDE

\* DIMENSIONS ARE APPROXIMATE AND FOR ILLUSTRATIVE PURPOSES ONLY

ypa