

103 Turpentine Road Brookfield VIC

4  2  2 

Providing a rare and unique opportunity to grasp what Brookfield has to offer. Situated on a very generous allotment of 610m² (approx.) and within close proximity to local shopping complexes, schools of all levels (including the current school under construction due to be completed by the end of the year), parks, leisure centre, public transport, freeway access and so much more. This wonderful property is a great opportunity for you and your family.

Upon entering into this outstanding family domain you are met by the spacious master bedroom complete with double blinds and a beautiful barn door leading to a sizeable walk-in robe that offers ample storage and space followed by the exceptional ensuite complete with plenty of bench space and an oversize shower with upgraded shower head. Before you enter the open plan, you are met with a tucked

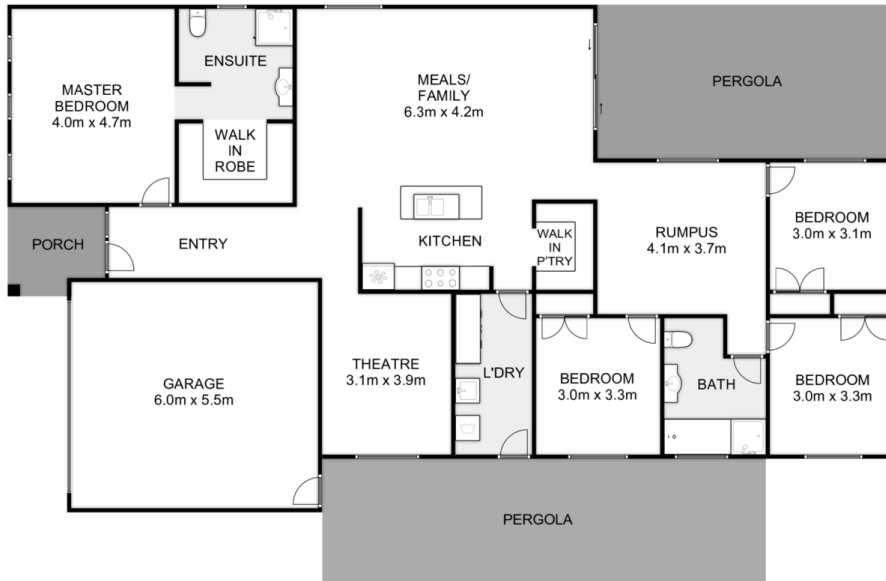
Price : \$ 655,000
Land Size : 610 sqm
View : <https://www.ypa.com.au/7774681>



Ryan Anders
0434 900 300



Britteny Cooke
0401 952 532



103 Turpentine Road, Brookfield

Ypa

Whilst every attempt has been made to ensure the accuracy of the floor plan contained here, measurements of doors, windows, rooms and any other items are approximate and no responsibility is taken for any error, omission, or mis-statement. This plan is for illustrative purposes only and should be used as such by any prospective purchaser. The services, systems and appliances shown have not been tested and no guarantee as to their operability or efficiency can be given.

