

8 Alesia Court Werribee VIC

3 2 2

With location ticking all the boxes you are positioned in the ever so desirable 'South Side' precinct. Providing an absolute dream lifestyle this home provides exceptional quality throughout and a perfect home to suit any family. With school zones being a premium, you are within close proximity to Werribee High School, Mackillop CRC, Werribee Primary & Corpus Christie Primary School, certainly providing plenty of options. Also, nearby you have Werribee CBD & Railway Station, Parklands, Walking tracks, Freeway Access & only a short 5 - 10-minute drive to the best attractions including Wyndham Harbour, Werribee Mansion Hotel & Spa & Werribee Open Range Zoo

- ? Three generous size bedrooms with robes
- ? Master bedroom with walk in robe and ensuite as well as electric roller shutters
- ? Central bathroom with separate toilet

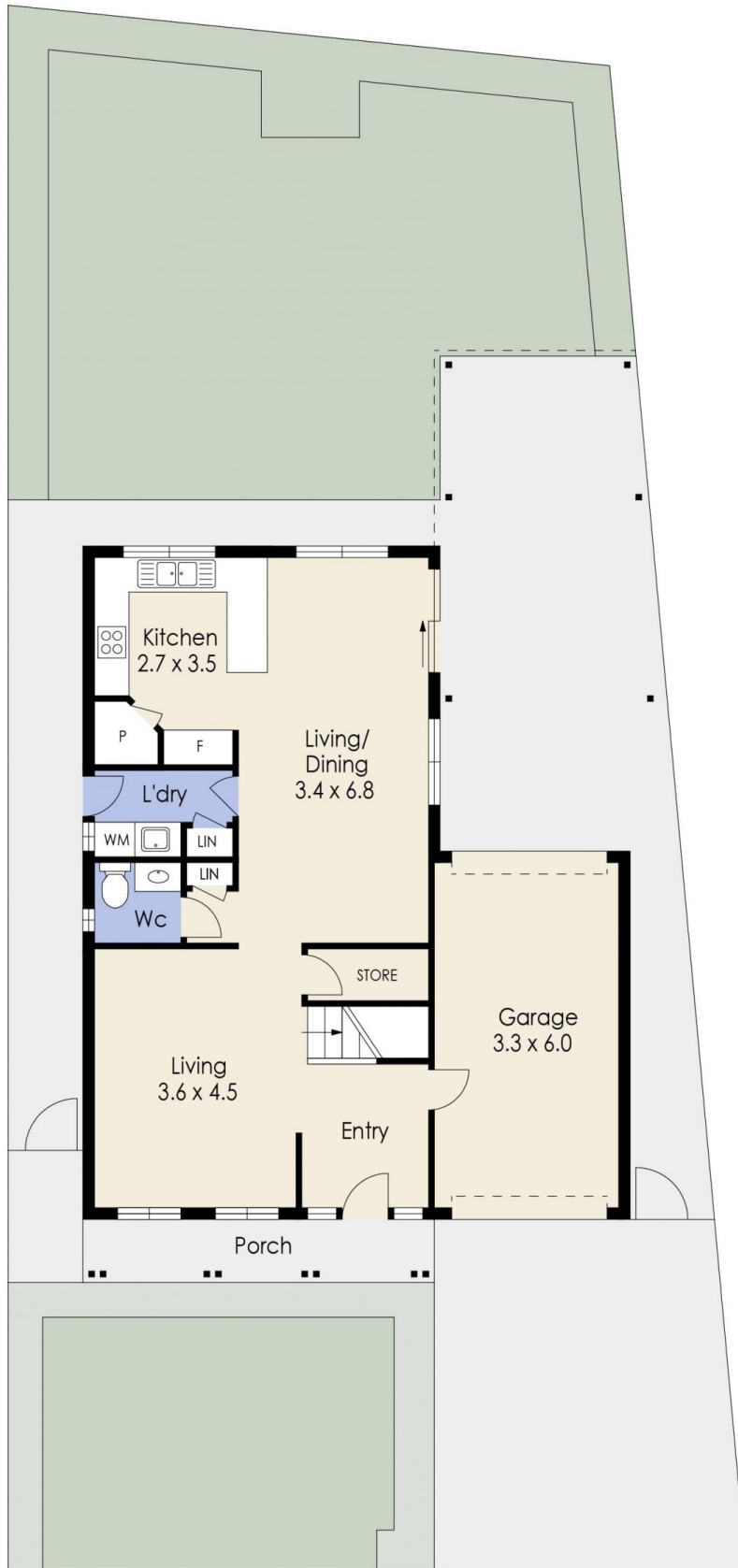
Price : \$ 643,000
Land Size : 319 sqm
View : <https://www.ypa.com.au/7766922>



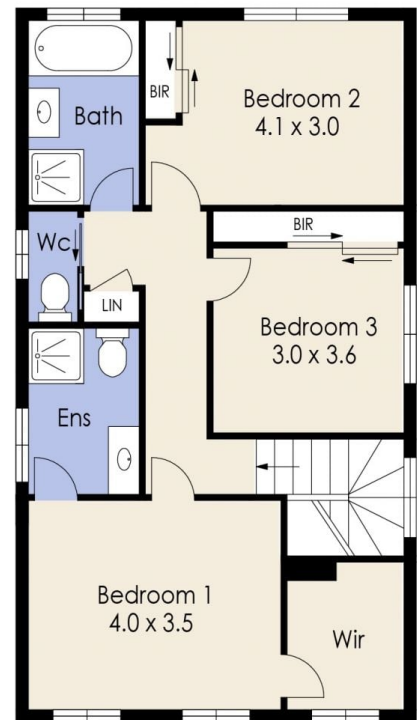
Mitch Smit
0450 913 513



James Christou
0450 733 302



Ground Floor



First Floor

Whilst every attempt has been made to ensure the accuracy of the floor plan contained here, measurements of doors, windows, rooms and any other items are approximate and no responsibility is taken for any error, omission, or mis-statement. This plan is for illustrative purposes only and should be used as such by any prospective purchaser. The services, systems and appliances shown have not been tested and no guarantee as to their operability or efficiency can be given.