



28 Chateau Promenade Deanside VIC

3 2 1

Well it doesn't get any neater or sweeter than this, with so much on offer you will immediately fall in love. Standing in a prime Deanside location, this property is perfect for first home buyers, investors, or anyone looking to downsize. With a thriving property market and convenient amenities nearby, this gem won't stay on the market for long! Only moments away from Taylors Road, CS Square, quality primary and secondary schools, public transport, local shops, child care and so much more upcoming.

Features include:

- ? Master bedroom showcases a walk-in wardrobe and ensuite with caesar stone bench top and quality fittings
- ? Additional two spacious bedrooms with built-in wardrobes
- ? Home office
- ? The kitchen is located perfectly to incorporate the meals and family area

Price : \$ 555,000
Land Size : 148 sqm
View : <https://www.ypa.com.au/7756074>



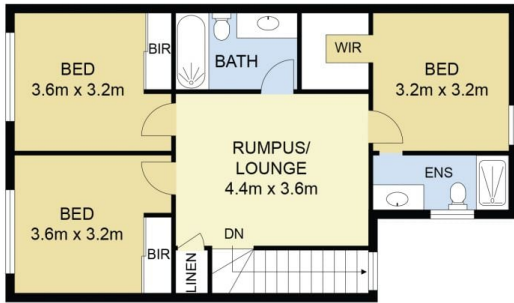
Andrew Migliorisi
0432 526 844



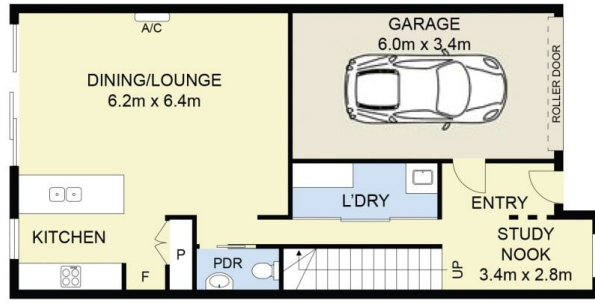
Stephen Azzopardi
0402 012 554



SITE PLAN
(NOT TO SCALE)

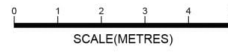


FIRST FLOOR



GROUND FLOOR

28 Chateau Promenade, Deanside



DISCLAIMER : ALL DIMENSIONS ARE AN APPROXIMATION ONLY AND NO GUARANTEE IS GIVEN WITH RESPECT TO ACCURACY.