

76 Connor Street Bacchus Marsh VIC

4 2 2

Introducing this immaculately presented home, a great example of modern-day real estate. Situated in a quiet and sort after area on Bellevue Tops on approximately 412m², this residence boasts high-quality finishes and offers an array of must-see extras and upgrades.

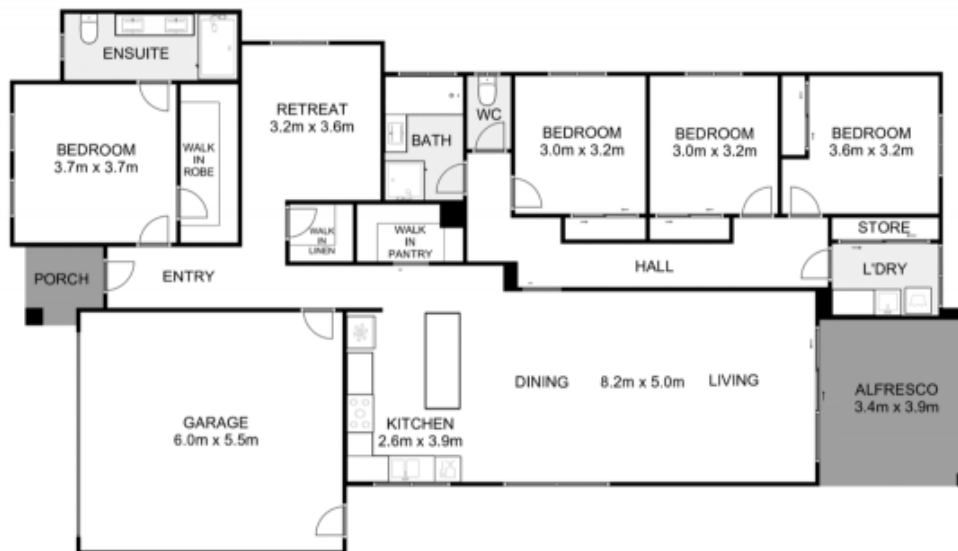
This exceptional home features four bedrooms, all equipped with built-in robes. The master bedroom stands out with a full walk-in robe and ensuite. The open, modern kitchen adorned with stainless steel appliances and a walk-in pantry overlooks a spacious family/meals area, seamlessly connecting to the outdoors through sliding door access, ideal for indoor/outdoor living.

Noteworthy extras encompass refrigerated heating and cooling, ensuring year-round comfort, along with CCTV for enhanced security. Revel in the grandeur of high ceilings

Price : UNDER CONTRACT TEAM YPA
Land Size : 412 sqm
View : <https://www.ypa.com.au/7749509>



Shane O'Brien
0431 766 082



76 Connor Street, Bacchus Marsh



Whilst every attempt has been made to ensure the accuracy of the floor plan contained here, measurements of doors, windows, rooms and any other items are approximate and no responsibility is taken for any error, omission, or mis-statement. This plan is for illustrative purposes only and should be used as such by any prospective purchaser. The services, systems and appliances shown have not been tested and no guarantee as to their operability or efficiency can be given.

