

**3/23 Jellicoe Street Werribee VIC**

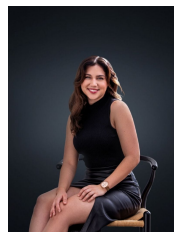
2  1  1 

Every amenity you would ever need is within reach right from your front door, on the cusp of the main street of Werribee you are in the heart of it all! Within walking distance to Werribee Train Station, Cafés/Restaurants, schools and lovely parklands. Also access to the freeway is 260m away from the end of Jellicoe Street to get you into Melbourne CBD within approx. 40 mins. This home is a dream!

Property Features:

- ? Two generous bedrooms, both fitted with built in robes
- ? Light-filled formal lounge, alongside open-plan kitchen & dining
- ? Central modern bathroom tailored with bath-tub
- ? Separate laundry offering rear access

View : <https://www.ypa.com.au/7749506>



**Trinity Osorio Schwarz**  
0426 356 739



**Ali Dowling**  
03 9741 7777