



18 Portman Avenue Harkness VIC

4 2 2

This exciting piece of Melton real estate, built by Exclusive Homes and positioned in the highly sought-after pocket of the Arnold's Creek Estate sits in close proximity to Arnolds Creek Primary School, Arnolds Creek Reserve, Arnolds Creek Shopping Village and the Arnolds Creek Community Centre featuring public tennis and basketball courts. This property sitting on a generous 500m² (approx.) allotment boasts inclusions and finishes of the highest quality.

Leading up to the front door you are greeted with a stunning modern façade, accompanied by the beautiful low maintenance garden in full bloom setting the tone for your visit into your new home. Upon entry you are met with a front formal lounge area to accommodate the growing family featuring a standout bulkhead, wall niche, 9-foot ceilings, upgraded floor coverings, upgraded corning and tall skirting boards that continue throughout the home,

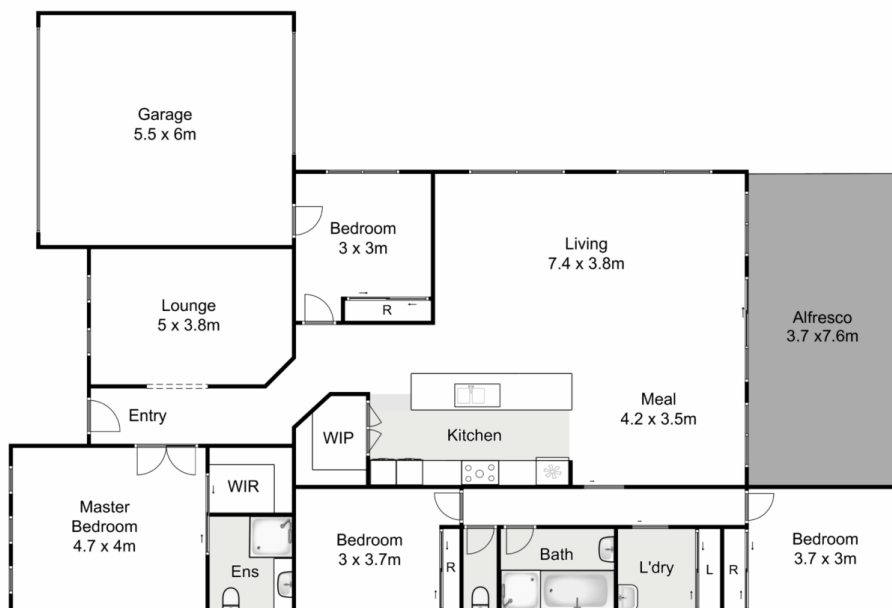
Price : \$ 630,000
Land Size : 500 sqm
View : <https://www.ypa.com.au/7748730>



Shane Spiteri
0488 980 115



Monty Tyagi
0435 896 907



18 Portman Avenue, Harkness

YPA

Whilst every attempt has been made to ensure the accuracy of the floor plan contained here, measurements of doors, windows, rooms and any other items are approximate and no responsibility is taken for any error, omission, or mis-statement. This plan is for illustrative purposes only and should be used as such by any prospective purchaser. The services, systems and appliances shown have not been tested and no guarantee as to their operability or efficiency can be given.

